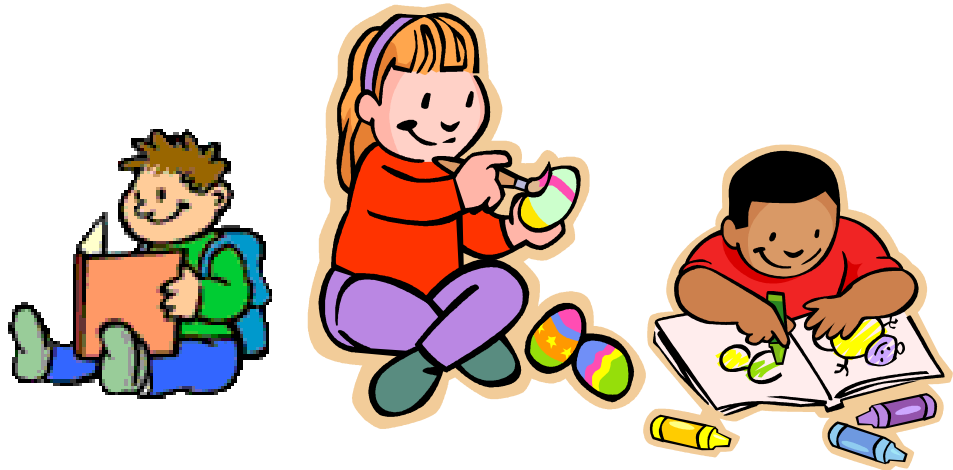


**Primary Schools
Information and Admissions Policies**

School Year 2012/2013



Banbridge District Council Area



EDUCATION AND LIBRARY BOARDS FOR NORTHERN IRELAND*

ADMISSION TO PRIMARY SCHOOL



Any child whose 4th birthday falls **on or before 1 July 2012** will have reached **compulsory** school age in September 2012 and **must** commence primary education.



Parents of children in the above age-group should contact the Principals of the schools being considered for attendance. The Principals will be in a position to provide an application form and other information regarding admission. The Principal of the Primary School will also be able to tell parents if a Reception Class is available for children who reach their 4th birthday after **1 July 2012**.

For Primary Schools the closing date for lodging application forms is **Wednesday, 18 January 2012 (12 noon)**.

ADMISSION TO PRE-SCHOOL EDUCATION



YOUR CHILD MAY BE ENTITLED TO A FREE PRE-SCHOOL PLACE



Free places are available in **all** Nursery schools and nursery classes in Primary schools and in some voluntary/private playgroups and day nurseries for children born between **2 July 2008 and 1 July 2009**. Details of centres which provide **free places** are contained in information booklets prepared by the Education and Library Boards. **A few schools** may have **places** available for younger children after target age children have been placed.

You should contact the Principals of schools or the leaders of the centres in which you are interested in obtaining places. You will be given an information booklet and an application form.

The **closing date** for lodging an application form for a **free pre-school place** is **Wednesday, 11 January 2012 (12 noon)**.

Remember - Only one official application form **MUST** be submitted for every child seeking a pre-school place in September 2012. All preferences should be listed in order on this form.

If additional information is required or any difficulty is experienced parents should contact their local Education & Library Board

Belfast Education & Library Board 40 Academy Street BELFAST BT1 2NQ	North-Eastern Education & Library Board County Hall 182 Galgorm Road BALLYMENA BT42 1HN	South-Eastern Education & Library Board Grahamsbridge Road Dundonald BELFAST BT16 2HS	Southern Education & Library Board 3 Charlemont Place The Mall ARMAGH BT61 9AX	Western Education & Library Board 1 Hospital Road OMAGH BT79 0AW
Tel No: (028) 9056 4080	Tel No: (028) 2566 2197	Tel No: (028) 9056 6568	Tel No: (028) 3751 2526/2455	Tel No: (028) 8241 1458

*It is planned that the Education and Library Boards will be dissolved and their functions transfer to the new Education Skills Authority (ESA).

Please note: This booklet contains references to the Education and Library Boards (ELBs) and the Council for Catholic Maintained Schools (CCMS). It is planned that the ELBs and CCMS will be dissolved and their functions transfer to the new Education and Skills Authority (ESA). Therefore all references in this booklet to the ELBs and CCMS should be interpreted as applying to ESA when it comes into operation.

ADMISSION TO PRIMARY SCHOOL DURING THE 2012/2013 SCHOOL YEAR

Dear Parent

Your child is now approaching the age of 4 years or indeed may already be 4. Within this booklet are the admissions policies for the primary schools in your council area. You must complete an application form and give it to the first preference school **by 12 noon on Wednesday, 18 January 2012**. Notes of guidance are printed on the back of the form to assist you in completion but you should read carefully the admission criteria published for the schools that you are listing as preferences for your child. Schools will send out letters on **Wednesday 18 April 2012** to inform the parents of the children they are accepting for admission.

TRANSPORT AND BENEFITS ARRANGEMENTS AND GUIDANCE

Information is enclosed about transport, school meals and uniform grants.

PREPARATORY DEPARTMENTS OF GRAMMAR SCHOOLS

If you wish to enrol your child in the preparatory department of a grammar school, you should contact the Principal of the grammar school concerned to obtain more information.

SCHOOLS IN OTHER AREAS

Information about schools in a different council area is available on the Board's website www.selb.org/pupilparent/index.htm. If you want information about a school in the area of another Board you should contact the relevant Board. Most schools publish their own prospectuses which give more information about the individual school. A prospectus can be obtained from the school.

HELP

Help may be obtained from the Principal of any primary school or from the Board's Pupil and Parent Unit: Telephone (028) 3751 2526 or (028) 3751 2455.

I trust that the above information is helpful and I look forward to having your child in one of the primary schools in the Board's area.

Yours faithfully

A P Murphy
CHIEF EXECUTIVE

Paprašius informaciją galima gauti prieinamu Brailio rašto, disko/diskelio ir audiokasetės formatu tautinių mažumų kalbomis. Taikoma asmenims silpnai kalbantiems angliskai.

Lithuanian

Na żądanie informacje udostępniamy w alfabecie brajla, na płytach CD i kasetach, a także w innych wersjach językowych dla osób nie posiadających biegłej znajomości języka angielskiego.

Polish

Mediante pedido, estas informações serão fornecidas em formatos acessíveis como, por exemplo, em caracteres Braille, em disquete e cassete de áudio e em vários idiomas minoritários para atender às necessidades das pessoas que não falam inglês fluentemente.

Portuguese

Information will be available on request in accessible formats such as Braille, disk and audio cassette and in minority languages to meet the needs of those who are not fluent in English.

PRIMARY SCHOOL ADMISSIONS BOOKLET PREFATORY LETTER

Dear Applicant

You may or may not be aware of the purported issue of “grannyng” – a practice in which those applying to schools enter false or incorrect addresses in the process of school admissions in order to advantage their application in the process. This issue, the subject of a 2007 Judicial Review, has demonstrated the importance of ensuring that information at the heart of the school admissions process – not just residential but also concerning the age of children and their familial links to schools – is correct and accurate and that the process, above all, is fair.

The Department of Education has issued guidance to schools on their “duty to verify” important information contained within applications for admission. For this reason, for admissions into the 2012/13 school year many primary schools will request, towards the end of the admissions process (April/May 2012), that applicants provide documents verifying information contained within their applications: in most cases this will be requests for documents verifying address/child-age. Alternatively some schools may ask for verifying documents to be attached to the application form and you should study carefully the admissions criteria of any school that you are listing as a preference to determine if this is the case. The precise details of later requests will be determined and communicated by individual schools when the time comes. In making their applications, applicants should consider that the information they provide on their application form (particularly information relating to their address) will, in the future, need to be verified if it is to determine the success of their application.

If, following your application, you receive such a request from a school, please consider it carefully and ensure you comply with it. Please note:

- Primary schools have been advised that if at any point they discover the presence of false, inaccurate or incorrect information within applications, they will be required under their obligations as statutory admissions authority to take action to ensure that their admissions criteria are correctly applied;
- For this reason the provision of false or incorrect information or the failure to provide information within the deadlines set by primary schools can result in the withdrawal of a place and the inability to offer a place on the part of any school nominated on the application form.

Please note that the rules governing eligibility for transport assistance may alter during your child's time at any particular school and this should be taken into consideration when choosing schools to list as preferences on the application form.

The admissions and transfer systems work because the vast majority of applicants operate in good faith and represent themselves fairly and accurately. We look forward to your co-operation in ensuring that this continues.

DEPARTMENT OF EDUCATION

BANBRIDGE DISTRICT COUNCIL AREA

CONTENTS

	PAGE NO.
List of Primary Schools in Banbridge District Council Area	1
Glossary of Terms	2-3
Timetable for Enrolment in Primary Schools	4
Admission to Primary Education	5-8
Transport assistance for pupils attending Primary Schools	9
Provision of school meals in Primary Schools	10
School Uniform	11
Notes of guidance on completion and sample application form	12-13
Admissions policies - Controlled Schools in alphabetical order	14-37
Admissions policies - Catholic Maintained Schools in alphabetical order	38-55
Admission policy – Grant Maintained Integrated Primary School	56-57
List of Primary Schools in other Council Areas within the SELB	58-62

The information in this booklet relates to the 2012/2013 school year and is correct at 9 November 2011.

LIST OF PRIMARY SCHOOLS IN BANBRIDGE DISTRICT COUNCIL AREA

Details of schools are included in the following order:-

CONTROLLED

Abercorn
Ballydown
Bronte
Dromore Central
Drumadonnell
Edenderry (Banbridge)
Fair Hill
Gilford
Iveagh
Milltown
Moyallon
Scarva

MAINTAINED

St Colman's (Annaclone)
St Colman's (Dromore)
St Colman's (Laurencetown)
St Francis' (Aghaderg)
St John's (Gilford)
St Mary's (Banbridge)
St Mary's (Dechomet)
St Mary's (Rathfriland)
St Matthew's (Magheramayo)
St Michael's (Finnis)

GRANT MAINTAINED INTEGRATED

Bridge

A list of Primary Schools in other Council Areas in the Southern Education and Library Board may be found at the back of this booklet. The booklets for all Council Areas are published on the Board's website www.selb.org/pupilparent/index.htm or may be requested by contacting the Pupil and Parent Unit (028) 3751 2455 or (028) 3751 2526.

GLOSSARY OF TERMS USED IN THIS BOOKLET

Admissions Criteria	The criteria drawn up by the Board of Governors of each school and applied in order to select the pupils to be admitted if the school is over subscribed.
Admissions Number	The number of pupils which the school is allowed to admit into P1 (and the reception class, where applicable) in the relevant school year. This number is determined by the Department of Education.
Compulsory School Age	The range of ages during which a child must receive education. In relation to enrolment in primary school in September 2012 children born on or between 2 July 2007 and 1 July 2008 will have reached compulsory school age i.e. any child who reaches his/her fourth birthday on or before 1 July 2012.
Controlled School	A school which is owned and funded by an Education and Library Board but managed by a Board of Governors. The Boards of Governors of controlled schools consist of representatives of transferors (i.e. those bodies which formerly provided schools and transferred them to the state system, mainly the Protestant Churches) along with representatives of parents, teachers and the Board.
Controlled Integrated School	The ownership, management and funding of these schools is the same as a controlled school.
Education Reform Order	The Education Reform (Northern Ireland) Order 1989 which, among other provisions, introduced the requirements regarding the curriculum and assessment in schools.
Enrolment Number	The maximum number of pupils which a school may have on its register at any time. This number is determined by the Department of Education.
Grant Maintained Integrated School	A school which is funded directly by the Department of Education and which endeavours to promote an ethos of integrated education between pupils of different religions.

Independent Appeal Tribunal	A Tribunal set up by the Education and Library Board, but independent of it, which hears appeals lodged by parents against the decisions of Boards of Governors regarding admissions.
Irish-Medium School	A school or unit within a school where teaching and learning takes place through the Irish language.
Maintained School	A voluntary school which is owned by Trustees, in most cases representatives of Roman Catholic parishes, and managed by Boards of Governors. Operational costs for maintained schools are met under the LMS arrangements administered by the Board.
Northern Ireland Curriculum	The areas of study, laid down in Education Reform Order, which each school is obliged to provide for its pupils.
Oversubscription	When a school has more requests for places than places available. In this situation the admissions criteria will be applied and some children will not be admitted to the school.
Pastoral Care	Arrangements for the personal and social welfare of individual pupils.
Physical Capacity	The maximum number of pupils which may be accommodated within the facilities available at the school.
Reception Class	Children enrolled in a primary school, excluding nursery units, who are aged 4 but have not reached the lower limit of compulsory school age, and who will be entering P1 the following September. These children will not be following the P1 element of the Northern Ireland Curriculum.
Sub-criteria	If within one admission criterion there is oversubscription, some schools will apply a clearly defined set of sub-criteria to identify the children to be admitted.
The Education (Northern Ireland) Order 1997	The Education (Northern Ireland) Order 1997 which includes the requirements for admission to schools.

TIMETABLE FOR ENROLMENT IN PRIMARY SCHOOLS

FOR SEPTEMBER 2012

18 January 2012 (Not later than 12 noon)	Closing date for receipt of parents' applications to first preference Primary Schools.
16 March 2012	Final date by which the board will process: <ul style="list-style-type: none">• any changes necessitated by exceptional circumstances (eg change of address which necessitates a change of preference – verification of exceptional circumstances will be required);• new applications;• additional preferences and• new information.
18 April 2012	Issue of letters by schools/boards advising parents of the Primary School for which their child has been accepted/not accepted.
30 April 2012 Not later than 4.00 pm	Final date for notice of intention to appeal against admission decisions to be received by Boards

Any reference in this booklet to parents or guardians includes any person who has parental responsibility for a child as defined in the Children (Northern Ireland) Order 1995

ADMISSION TO PRIMARY EDUCATION

1 LEGAL POSITION

The Education (Northern Ireland) Order 1997 enables parents to state their preference for the primary school to be attended by their child but it cannot be guaranteed that every child will be selected for admission to a primary school of your preference.

WHERE CAN I GET AN APPLICATION FORM?

Application forms are available from primary schools or can be downloaded from the Board's website www.selb.org/pupilparent/index.htm. Each school has an admissions policy decided by the Board of Governors. The Southern Education and Library Board publishes a booklet for each council area within the Southern Board which contains the admissions policy for each school. Details of the policy may also be obtained from the school and is also contained in the school's prospectus. Copies of the booklets are also available on the Board's website www.selb.org/pupilparent/index.htm. Free internet access is available in many libraries. Please contact your local library for details.

2 ADMISSION ARRANGEMENTS

The Department of Education decides in consultation with the school and the relevant authority the number of children which can be admitted to P1 in each school on the basis of its accommodation and schools must admit children up to that number.

The Southern Education and Library Board is not responsible for deciding the admissions policy of any school but it administers applications where children are not admitted to the school of the parents' first or subsequent preference and operates a procedure to allow parents to appeal such decisions if they so wish.

It is the responsibility of the Board of Governors to draw up admissions criteria and apply them if there are more applications than places. The Board of Governors cannot be held responsible for refusing your child a place if you do not detail the relevant information on the application form or do not attach any documentation requested. The Board of Governors may delegate the authority to apply the admissions criteria to a committee of members or to the principal.

3 CHILDREN OF COMPULSORY SCHOOL AGE

Children of compulsory school age are those who were born between 2 July 2007 and 1 July 2008 inclusive i.e. children who reach their fourth birthday on or before 1 July 2012 must begin their primary education. Schools must give priority to their admission but may not be able to accept all children if the number of applications exceeds the admissions number of the school.

4 CHILDREN NOT OF COMPULSORY SCHOOL AGE

Children not of compulsory school age are those who were born between 2 July 2008 and 1 July 2009. These children can be considered for a place in a primary school for the school year 2012/2013. They may only be admitted to a reception class once the child has reached their fourth birthday and will not receive the formal P1 element of the Northern Ireland Curriculum until September 2013. A substantial number of schools do not admit children to a reception class and are perfectly entitled to do this. The Minister for Education has indicated that, in due course, the majority of reception classes will be phased out. It is possible that some schools will not be able to admit all children not of compulsory school age that they thought they might. This is because of the change mentioned above and because since September 2000 no class with Reception, or Key Stage 1 (P1-P4) pupils may have more than 30 pupils.

Parents of children in this age group may wish to apply for a pre-school place. A separate information booklet and application form is provided for pre-school. These may be obtained from any pre-school setting participating in the Pre-school Education Expansion Programme or on the Board's website www.selb.org/pupilparent/index.htm.

5 HOW TO MAKE APPLICATION FOR ENROLMENT IN PRIMARY SCHOOL

Before completing the application form you should carefully read the notes of guidance relating to the application form and the information about schools and their admissions criteria contained in this booklet.

It is in your best interests to make sure that you supply all the information required on the application form e.g. brothers/sisters attend/attended, close family relationships, religious affiliation etc. and in particular that you state at least **three** preferences.

If you have applied for admission directly to a preparatory department of a grammar school you may still express preferences for controlled, maintained and integrated primary schools on the board's application form. You should complete only **one** application form for your child and send it together with your child's birth certificate and any additional information, to the principal of your first preference school. The form must be returned no later than **12 noon on Wednesday 18 January 2012**. As only one application form is permitted you should list the schools of your choice on this form in your order of preference.

Please note that, while the Southern Education and Library Board administers the open enrolment arrangements, it has no power to place your child in a particular primary school. The selection of children for enrolment is a matter for individual school Boards of Governors.

If you require any further information about school admissions you should contact the principal of your first preference school. A sample of the application form is contained in this booklet.

6 CHANGE OF PREFERENCES/ADDITIONAL INFORMATION

If you wish to change your preference you must withdraw the original application and then submit a new application unless there are exceptional circumstances (e.g. change of address which necessitates a change of preference – verification of exceptional circumstances will be required). If this occurs after 12 noon on 18 January 2012 your "new" application will be treated as "late".

Even changes of preference in exceptional circumstances received after Friday 16 March will not be processed by ELBs.

Friday 16 March 2012 is also the final date by which the board will process:

- any new applications;
- additional preferences; or
- new information.

Parents should be aware that after 18 April 2012 a number of schools will have allocated all their places and can only give consideration to a change of preference in the event that a place becomes available. It is important that parents give very careful consideration to the stated order of their preferences and indicate any changes to the board by 12 noon on 18 January 2012 at the latest and also provide any additional relevant information by that date.

7 LATE APPLICATIONS

Punctual applications (i.e. those received by the specified closing date for receipt of applications) will be given priority consideration in the admissions process. Late applications (i.e. applications received after 12 noon on 18 January 2012) will be dealt with separately and may only be considered for admission after

all *punctual* applicants have been dealt with and vacancies still remain within the school's admissions number.

Where places subsequently become available in over-subscribed schools after Wednesday 18 April 2012, unsuccessful punctual applications and new applications will be considered on an equal basis with any 'late' applications received after the closing date, and places allocated to the children who best satisfy the school's admissions criteria.

8 CONSIDERATION OF APPLICATIONS BY SCHOOLS

In the event of the number of first preference applications being greater than a school's admissions number, the Board of Governors will apply the school's published admissions criteria to all such applicants to determine which children will be offered places up to the school's admission number. Responsibility for drawing up and applying a school's admissions criteria rests solely with its Board of Governors.

If your child is not accepted by your first preference school the application form and any documents attached will be forwarded by the Board to your second preference school. The process, already described, will be repeated until your child is placed. Places will be allocated to those who best meet the schools' admission criteria. If your child is not offered a place in any of the schools for which you have stated a preference, the board will ask you to state further preferences so that the procedure may continue until a place is found for your child.

9 WHEN WILL I KNOW ABOUT THE DECISION IN RELATION TO MY CHILD'S ADMISSION?

On **Wednesday 18 April 2012** schools will issue letters to parents indicating that their child is to be admitted. In some cases this may not be the stated first preference school (see below). If you do not receive a letter on Thursday 19 April or Friday 20 April 2012 you should contact the Principal of the school you nominated as first preference.

In the unlikely event of your child not having been offered a place by the time the general notification of placement is issued, the board will advise you of those schools in which places are still available and ask you to state which of these schools you would wish your child to attend.

10 HOW TO MAKE A FORMAL APPEAL TO THE INDEPENDENT APPEAL TRIBUNAL

Parents can appeal if they consider that the Board of Governors has not applied its criteria or not applied them correctly in refusing their child admission.

If you wish to appeal you should contact the Clerk to the Independent Appeal Tribunal, The Southern Education and Library Board, 3 Charlemont Place, The Mall, Armagh, BT61 9AX (028 3751 2520).

Appeal Forms are obtainable from the Pupil and Parent Unit at Board headquarters. Written notice of intention to appeal must be lodged with the Board not later than **Monday, 30 April 2012 at 4.00 pm**, appeal letters received after this date will not be accepted. The Independent Appeal Tribunal will consider the information that was available to the Board of Governors when it considered the request for admission.

Your notice of intention to appeal will be acknowledged and at the same time you will be sent an official appeal form on which you must make your appeal. If you do not receive an official form within 5 working days or before the closing date please contact the Pupil and Parent Unit (Telephone 028 3751 2455/2526).

A final date for receipt of the official appeal form will be shown on the correspondence from the board officer. If the appeal form is not received by this given date, the appeal will not proceed. It is the parent's responsibility to ensure that any documentation arrives with the board by the specified date.

11 APPEAL HEARING

Normally there will be 7 days notice of the time, date and venue of the Independent Appeal Tribunal. All the information relevant to each case must be with the Clerk to the Independent Appeal Tribunal 5 working days before the tribunal hearing.

The Independent Appeal Tribunal will decide whether or not a school has correctly applied its admissions criteria. **The Independent Appeal Tribunal will be in private and its proceedings will be confidential.** The Independent Appeal Tribunal will give an opportunity to the Board of Governors to make a written submission and/or oral representations to explain the reasons for making its decision. In addition a parent may attend and present the case personally or with the help of a friend or a professional representative, such as a solicitor.

Should the Independent Appeal Tribunal decide that the school did not apply its admissions criteria correctly, it has the power to place the child in the school where it considers that, if the Board of Governors had applied its criteria correctly, the child would have been admitted. The parent or guardian will be advised of the decision of the Independent Appeal Tribunal as soon as possible after the hearing. The decision will also be sent to the Board of Governors of the school the appeal against was made.

The members of the Independent Appeal Tribunal are independent of the Board. A Board Officer acts as Clerk to the Independent Appeal Tribunal.

NOTE

The advice which has been given is based on the Education Reform (NI) Order 1997 and the related regulations. While every effort has been made to ensure that the information is accurate, it is given as guidance and not as an authoritative interpretation of the law.

It should be noted that any additional information, which was not available to the Board of Governors at the time of the allocation of places, cannot be taken into account by an Independent Appeal Tribunal.

Should a vacancy arise in an over-subscribed school after 18 April 2012 all applications that were refused, new applications, late applications and new information will now be considered on an equal basis and the available place(s) allocated to the child/children who best satisfy the school's admissions criteria.

TRANSPORT ASSISTANCE FOR PUPILS ATTENDING PRIMARY SCHOOLS

School Transport and Travel

The Board has a statutory responsibility for the provision of transport assistance to facilitate the attendance at a grant-aided school of pupils for whom fees are not paid and who are resident in Northern Ireland. Pupils must have reached compulsory school age by the 1 September of the year they are enrolled to be eligible for assistance.

A pupil whose permanent home address is located over two miles from the nearest suitable primary school, measured by the shortest available walking route, is entitled to transport assistance. A 'suitable school' is defined as: Controlled, Catholic Maintained, Integrated or Irish Medium.

Single Sex and Co-Educational Schools

Parents should note that the categories of schools listed above do not include single sex or co-educational schools. Preferences expressed on grounds of single-sex or co-educational schools will not qualify for transport assistance if an otherwise suitable school exists within statutory walking distance and the chosen school lies outside this limit.

Reception Classes

A child enrolled in a reception class may receive concessionary transport on a Board bus provided there is a seat available. Parents must make application directly to the Board's Transport Department to secure a concessionary seat. Existing routes will not be extended or altered to accommodate children in reception classes. Boards may be required to make a charge for this service.

The provision of transport assistance for children commencing primary education is restricted to pupils who have been unable to find places in a suitable school within statutory walking distance (two miles) of their permanent home address. Where there is no suitable school within statutory walking distance of the child's home transport will be provided to the school attended providing that a suitable Board or public transport service to or in the vicinity of the school is already available. The Board is not obliged to introduce a service where none exists, to extend a service nor to provide transport where either the service is deemed unsuitable or the cost of doing so could result in unreasonable public expenditure.

Parents must satisfy themselves when seeking admission to schools for their children that a suitable transport service is available. Gaining a place in a school does not automatically commit the Board to providing transport. If a parent has any doubts they should speak with the SELB Transport Section for further advice.

The Board may also pay a travel allowance to the parents of a pupil where the Board has approved transport on medical or other grounds and is itself unable to provide a suitable service. Special transport arrangements may be provided for children under a Statement of Special Educational Needs who are enrolled at approved Special Schools or Learning Support Centres attached to Primary Schools.

Please note that the rules governing eligibility for transport assistance may alter during your child's time at any particular school and this should be taken into consideration when choosing schools to list as preferences on the application form.

SCHOOL MEALS

Nutritionally balanced Mid-day meals are available in all primary schools.

Pupils of compulsory school age shall be entitled to free school meals where:

- 1 the parent is in receipt of Income Support; or
- 2 the parent is in receipt of Income-based Jobseekers' Allowance; or
- 3 the parent receives the Guarantee element of State Pension Credit; or
- 4 the parent is in receipt of Income Related Employment and Support Allowance; or
- 5 the parent receives the Child Tax Credit; and **is ineligible for Working Tax Credit** because he/she works less than 16 hours per week; and has an annual taxable income not exceeding an amount as determined by the Department (currently £16,190); or
- 6 the parent receives Working Tax Credit with a taxable income of £16,190 or less; or
- 7 he/she is a child of an asylum seeker supported by the Home Office National Asylum Support Services (NASS).

Parents are encouraged to apply for free meals for their children by completing application forms available at schools and Board headquarters. It is important that parents make application to the Board as soon as possible after becoming entitled to one of the above benefits since free meals cannot be provided until the principal of the school received confirmation from the board in writing of a pupil's entitlement. Parents of pupils who are currently in receipt of school meals have no need to reapply.

Provision of Facilities For Bringing Food To School

The Board, where practicable, makes arrangements to enable lunch-takers to eat in reasonable conditions, but it will not provide facilities for cooking or heating food and it does not provide knives, forks, cups, etc. The arrangements for lunch-takers vary from school-to-school, depending on the accommodation available.

SCHOOL MILK

Free Milk: The Board shall provide every pupil with one-third of a pint of milk on every day the school is open for instruction:-

- 1 Where school meals are not available; or
- 2 To a pupil who holds a valid certificate signed by a medical officer of the appropriate Health and Social Services Board stating that it is necessary in the interests of that pupil that he/she be provided with milk.

EC Milk Subsidy: Where an EC Subsidy Milk Scheme is in operation pupils shall be provided with one-third of a pint of milk on every day the school is open for instruction. The present charge of 14p per one-third pint shall be reviewed from time to time. Milk is paid for in advance on a weekly or termly basis.

SCHOOL UNIFORM

Pupils of compulsory school age shall be entitled to a uniform allowance where:

- 1 the parent is in receipt of Income Support; or
- 2 the parent is in receipt of Income-based Jobseekers' Allowance; or
- 3 the parent receives the Guarantee element of State Pension Credit; or
- 4 the parent is in receipt of Income Related Employment and Support Allowance; or
- 5 the parent receives the Child Tax Credit; and **is ineligible for Working Tax Credit** because he/she works less than 16 hours per week; and has an annual taxable income not exceeding an amount as determined by the Department (currently £16,190); or
- 6 the parent receives Working Tax Credit with a taxable income of £16,190 or less; or
- 7 he/she is a child of an asylum seeker supported by the Home Office National Asylum Support Services (NASS).

Application forms for new applicants are normally available from mid-April at the child's school or SELB Benefits Section (Tel. 028 3751 2523). Pupils who are currently in receipt of support will have renewal documentation sent to them by the Board.

NOTES OF GUIDANCE:

The following advice has been prepared to help you fill in this application form. You are also advised to read the Board's Information booklet on Primary Education. Copies are available from schools, the Board's Pupil and Parent Unit Tel: 028 3751 2455 or 028 3751 2526, the SELB's website www.selb.org (Click on For you, then Parents and finally Primary 4-11 years) and your local library. **Children born between 2 July 2007 and 1 July 2008 (inclusive) must commence primary education in September 2012.**

SECTION A – THE CHILD

You are asked to give information about the child whom you wish to have enrolled. **Child's Name** – You should ensure that the name recorded on the child's birth certificate is the name recorded on the application form, unless written consent from all persons with parental responsibility for the child or the leave of a court has been submitted to the Primary School, in accordance with The Children (NI) Order 1995. **Your child's birth certificate should be attached to this application form** along with any documentation requested in the published admissions criteria of the schools you are listing as your preferences. **The child's home address** should be the child's normal place of residence and not that of a child minder, another relative or a business address. **It is important that this includes the house number, road/street name and postcode.**

If your child is currently enrolled in a nursery school or unit, then you **must** complete an application form for entry into P1 in a Primary School. Children currently enrolled in the reception class in a primary school need not re-apply for entry into P1 for that particular school. If currently enrolled in a reception class but wishing to move to a different primary school, then in this case, you will need to re-apply for entry into P1 of that school. If in doubt about the position, you should consult the Principal of the school.

SECTION B – PREFERRED SCHOOLS AND REASONS FOR CHOICE

You are asked to state in order of preference schools which you would like your child to attend. You are strongly advised to give at least **three** preferences as your first preference school may not be able to offer a place to all of the children whose parents/guardians wish them to attend.

If a school is over-subscribed, the Board of Governors of the school will select those children who are to be admitted. How this will be done is described in the Booklet on Primary Education issued by the Board. Selection will be made by the strict application of the published Admissions Criteria drawn up by the Boards of Governors. Admissions Criteria will vary from school-to-school so it is important that you read this information very carefully. When completing your application form you should include all the information that will be necessary to assist the Board of Governors of your preferred schools with their selection of pupils. This information could include – brother/sister already attending; brother/sister did attend; eldest child; only child; other family connections; relation employed in school and any other relevant information such as medical condition etc. The application form also provides space for you to give reasons for your choice of school. This may be, for example, 'nearest suitable school' or 'I am a member of staff of this school'.

Note:- Additional sheets may be attached and you should put the name of your child at the top of each page.

SECTION C – DECLARATION

You should read this declaration very carefully and make sure you are complying with the statements made. It is particularly important that you have stated the correct HOME address for the child. **It is also important that only one application is submitted for each child.**

You should return the form, together with the child's birth certificate and any documentation as requested in the published admissions criteria of the school(s) you are listing, to your first preference school as soon as possible.

For those parents/guardians applying for a place in PRIMARY 1, the application form MUST BE RECEIVED BY YOUR FIRST PREFERENCE PRIMARY SCHOOL NO LATER THAN 12 NOON ON WEDNESDAY 18 JANUARY 2012.

Any application received after this date will be treated as a 'Late Application' and can only be considered if and when a vacancy occurs within the school.

DECISIONS

The school which has accepted your child will write to you on **Wednesday 18 April 2012** confirming admission arrangements. The ELB/ESA will write to the parents/guardians of compulsory school age children to seek further preferences for those children who have not been accepted by any of the schools listed on the application form.

If you require any further help in completing this form, you may contact the Principal of your first preference primary school or an Officer in the Pupil and Parent Unit, Tel 028 3751 2455 or 028 3751 2526.

**EDUCATION AND LIBRARY BOARDS OF NORTHERN IRELAND
APPLICATION FOR ENROLMENT IN A CONTROLLED, MAINTAINED OR
INTEGRATED PRIMARY SCHOOL IN THE 2012/13 SCHOOL YEAR**

Please read the Board's Information Booklet(s) before completing this form. Pay particular attention to the guidance overleaf on completing the form and the Admissions Criteria of the schools which you are nominating as preferences.

ONLY ONE APPLICATION FORM TO BE SUBMITTED IN RESPECT OF YOUR CHILD. PLEASE COMPLETE IN BLACK INK

SECTION A – THE CHILD

Surname* _____ Forename(s)* _____
(* as recorded on birth certificate)

Child's date of birth _____ (BIRTH CERTIFICATE SHOULD BE ATTACHED TO THIS FORM)

Name(s) of parent(s) or guardian(s) Dr/Mr/Mrs/Miss/Ms _____

Child's Home Address _____
_____ Postcode _____

Parent(s)/Guardian(s) Tel no: - Home _____ Mobile _____ Work _____

Is the above child currently enrolled in a pre-school setting or reception class? YES/NO

If 'YES' please state the name of pre-school setting or reception class in primary school attended _____

FOR SCHOOL USE			
Form received by 1st preference Primary School			
Date	Time	Initials	<input type="checkbox"/>
Birth Certificate checked & attached			<input type="checkbox"/>
Compulsory School Age	<input type="checkbox"/>	Non-Compulsory School Age	<input type="checkbox"/>
Male		<input type="checkbox"/>	Female <input type="checkbox"/>

SECTION B – PREFERRED SCHOOLS AND REASONS FOR CHOICE*

*Reasons for choice relate to published Admissions criteria (continue on a separate sheet if necessary).

Before completing this Section you should read the published Admissions Criteria very carefully.

Please list below, in order of preference, at least THREE primary schools which you would wish your child to be considered for admission. Please give any other information relevant to your child's admission in relation to the Admissions Criteria of the schools listed eg nearest school to child's home, living in parish, eldest child. If you are applying to an Integrated Primary School you may wish to state your child's **religious tradition** as this is important to the school.

Preferred Schools	Are there brothers/sisters currently attending? PLEASE TICK	FOR BOARD USE	
		Selected	Not Selected
1 _____ *Reasons for choice _____	YES <input type="checkbox"/>		
2 _____ *Reasons for choice _____	YES <input type="checkbox"/>		
3 _____ *Reasons for choice _____	YES <input type="checkbox"/>		

PLEASE READ THE ADMISSIONS CRITERIA FOR ALL SCHOOLS NAMED ABOVE AND LIST BELOW THE DOCUMENTS, IF ANY, WHICH YOU ARE ATTACHING TO THIS FORM.

Is your child being assessed for Special Educational Needs?

If you have further preferences please continue on a separate sheet and put the name of your child at the top. Please tick if further preferences are attached.

SECTION C – DECLARATION (to be signed by parent/guardian)

I hereby certify that:

- (a) I have read the published Admissions Criteria of the school(s) nominated above.
- (b) This is the **ONLY** application submitted for primary education in respect of the child named above (excluding Independent/Preparatory Schools).
- (c) The address which I have given is the child's home address and **NOT** the address of a child minder/another relative or a business address.
- (d) I understand that it is my responsibility to provide all relevant information on or attached to this application form.
- (e) The details I have given on this form are correct. I am aware that if a place is awarded on the basis of false information it may be withdrawn.

SIGNED _____ Parent/Guardian DATE _____

THIS FORM MUST BE RECEIVED BY THE FIRST PREFERENCE PRIMARY SCHOOL LISTED ABOVE NO LATER THAN 12 NOON ON WEDNESDAY 18 JANUARY 2012

DATA PROTECTION STATEMENT – The information on this form is required by the Board for the purpose of processing your application. The information is covered by the provisions of the Data Protection Act 1998. Your signature to the form is deemed to be an authorisation by you to allow the Board to process and retain the information for the purpose(s) stated

Abercorn Primary School
Newry Road
Banbridge
BT32 3HR
Telephone No: (028) 4066 2880
Fax No: (028) 4062 8826
Email: ssaulters707@c2kni.net

PRINCIPAL: Mrs S Y Saulters, BEd, MEd
CHAIRMAN OF BOARD OF GOVERNORS: Dr G. Byrne

Enrolment Number: 434

Admissions Number: 60

	APPLICATIONS		ADMISSIONS	
	Rec	P1	Rec	P1
2009/2010 School Year	-	39	-	39
2010/2011 School Year	-	56	-	56
2011/2012 School Year	-	60	-	60

Actual enrolment in September 2011: 325 pupils aged 4-11 years (Boys/Girls)
Expected enrolment in September 2012: 340 pupils aged 4-11 years (Boys/Girls)
School Management Type: Controlled

ADMISSION

If the school's admission and enrolment numbers have not been reached the school will admit all children of the appropriate age whose parents wish them to attend the school. These are children of compulsory school age (children who reach their fourth birthday on or before 1 July 2012).

The maximum number of pupils permitted in a Key Stage One class is 30 pupils.

ADMISSIONS CRITERIA

A committee of the Board of Governors will apply the following criteria in the order set down below to identify which children should be admitted either at initial admission to education or on transfer from another school. In selecting children for admission children resident in Northern Ireland at the time of their proposed admission to the school will be selected for admission to the school before any child not so resident.

CHILDREN OF COMPULSORY SCHOOL AGE

- 1 Children of compulsory school age.
- 2 Children who will have brothers or sisters (half brothers/sisters) attending the school in the 2012/13 school year.
- 3 Children whose brothers and sisters previously attended the school.
- 4 Children of permanent employees at the school.
- 5 Children with exceptional circumstances. Preference will be given to children with exceptional circumstances (medical, social or other problems) that necessitate admission to Abercorn Primary School rather than any other primary school. The circumstances should be personal to the child and must be supported by independent and appropriate documentation, providing evidence of the circumstances being described as being exceptional.
- 6 Other children.

In the event of over-subscription within any of the above criteria (except criterion 1) final selection will be based on proximity of the child's home to the school as determined by a radial measurement from the school as measured on the 1: 50000 Ordnance Survey Map.

Other pupils from P2-P7 will be admitted providing their admission is not prejudicial to the efficient use of resources, or the school's enrolment number is not exceeded. In the case of Key Stage One, no class should exceed 30 pupils. The Board of Governors will not allow a class size of 32 pupils to be exceeded at Key Stage Two.

ARRANGEMENTS FOR ADMISSION

During the summer term 2012 children to be admitted to P1 in September 2012 will be invited to come to the school with their parents to meet the teacher and to be provided with additional information.

Ballydown Primary School
64 Lisnaree Road
Banbridge
BT32 4JN
Telephone No: (028) 4066 2738
Fax No: (028) 4062 2357
Email: wcmullan295@c2kni.net

PRINCIPAL: Mr W. McMullan, MSc, BEd, DASE
CHAIRMAN OF BOARD OF GOVERNORS: Mr Ivan Jackson BSc (Hons) C.Eng. MICE MIWO

Enrolment Number: 319

Admissions Number: 45

	APPLICATIONS		ADMISSIONS	
	Rec	P1	Rec	P1
2009/2010 School Year	-	53	-	46* <small>(*1 pupil admitted on appeal)</small>
2010/2011 School Year	-	50	-	45
2011/2012 School Year	-	50	-	45

Actual enrolment in September 2011: 306 pupils aged 4-11 years (Boys/Girls) + 26 Nursery
Expected enrolment in September 2012: 306 pupils aged 4-11 years (Boys/Girls) + 26 Nursery
School Management Type: Controlled

ADMISSION

The Board of Governors is conscious of its responsibility to meet the legal requirements placed upon it by The Education Reform (Northern Ireland) Order 1989 in relation to the curriculum. In addition since a nursery class is in operation only children of compulsory school age will be admitted to primary classes. If the school's admissions and enrolment numbers have not been reached the school will admit all children of compulsory school age whose parents wish them to attend. Any child who reaches his/her fourth birthday on or before 1 July 2012 is of compulsory school age and must receive education from September 2012.

ADMISSIONS CRITERIA

The Board of Governors will apply the following criteria to identify which children should be admitted either at initial admission to education or on transfer from another school. In selecting children for admission children resident in Northern Ireland at the time of their proposed admission to the school will be selected for admission to the school before any child not so resident.

- 1 Children who will have brothers or sisters (half brothers/sisters) in attendance during the 2012/2013 School Year.
- 2 Children whose brothers or sisters (half brothers/sisters) have previously attended the school.
- 3 Children of permanent employees at the school.
- 4 Children for whom the school is the nearest controlled primary school to their home.

If you are claiming that Ballydown Primary School is your nearest controlled primary school to your home, please attach to your application form two of the following documents which must verify the child's address at the time of application.

- bank or building society statement
- a utility bill (electricity, gas, TV Licence etc.)
- Child Benefit letter
- child's medical card

Note

Other documents equally capable of verifying the child's address will be considered at the discretion of the Board of Governors.

- 5 Children who are currently in attendance at Ballydown Nursery Class.
- 6 Preference will be given to children with exceptional circumstances (medical, social or other problems) that necessitate admission to Ballydown Primary School rather than any other primary school. The circumstances

should be personal to the child and must be supported by independent and appropriate documentation, providing evidence of the circumstances being described as being exceptional.

7 Other children.

In the event of over-subscription within any of the above criteria final selection will be based on distance from the child's home to school, priority being given to those living closest to the school. (Distance will be measured on Google Maps UK, using the A to B tool). If the final places to be allocated have identical measurements as identified by Google Maps UK, selection will be on the basis of alphabetical order of surname, then forename, then middle name.

The Board of Governors reserves the right to require such supplementary evidence as it may determine to support or verify information on any application.

The provision of false or incorrect information or the failure to provide information within the deadlines set by primary schools can result in the withdrawal of a place and the inability to offer a place on the part of any school nominated on the applicant's application form.

ADMISSION OF PUPILS TO CLASSES P2 - P7

Admissions to P2 – P7 will be made providing the school's total enrolment has not been exceeded, their admission is not prejudicial to the efficient use of resources and providing that the class maximum size of 30 is not exceeded in key stage 1. An admissions application form must be completed.

The criteria for admission to P1 will be applied in the case of over-subscription.

ARRANGEMENTS FOR ADMISSION

During the summer term 2012 children to be admitted to P1 in September 2012 will be invited to come to the school with their parents to meet the teacher and to be provided with additional information.

Bronte Primary School
39 Ballinaskeagh Road
Banbridge
BT32 5BL
TelephoneNo: (028) 4065 1486
Fax No: (028) 4065 1565
Email: g davidson671@bronte.banbridge.ni.sch.uk

PRINCIPAL: Mrs G M E Davidson, BA, PGCE
CHAIRMAN OF BOARD OF GOVERNORS: Mr R Reynolds

Enrolment Number: 174

Admissions Number: 25

	APPLICATIONS		ADMISSIONS	
	Rec*	P1	Rec	P1
2009/2010 School Year	-	23	-	23
2010/2011 School Year	-	19	-	19
2011/2012 School Year	-	30	-	28

***There is no longer provision for children of non-compulsory age.**

Actual enrolment in September 2011: 173 pupils aged 4-11 years (Boys/Girls)
Expected enrolment in September 2012: 163 pupils aged 4-11 years (Boys/Girls)
School Management Type: Controlled

ADMISSION

Children of compulsory school age (i.e. those who have reached their fourth birthday by 1 July 2012) to be admitted during the week beginning 1 September 2012.

ADMISSIONS CRITERIA

The Board of Governors will apply the following criteria to identify which children should be admitted either at initial admission to education or on transfer from another school. In selecting children for admission children resident in Northern Ireland at the time of their proposed admission to the school will be selected for admission to the school before any child not so resident.

CHILDREN OF COMPULSORY SCHOOL AGE

- 1 Children who will have brothers or sisters in attendance at Bronte Primary School during the 2012/2013 School Year or previously.
- 2 Other children for whom Bronte Primary School is the nearest Controlled Primary School to the child's home.
- 3 Other children from whom the former Ballykeel West, Croreagh, Donaghmore, Edendale, Glaskermore or Shinn Primary School was the nearest Controlled Primary School to the child's home.
- 4 Sons or daughters of permanent employees at the school.
- 5 Preference will be given to children with exceptional circumstances (medical, social or other problems) that necessitate admission to Bronte Primary School rather than any other primary school. The circumstances should be personal to the child and must be supported by independent and appropriate documentation, e.g. a statutory body, providing evidence of the circumstances being described as being exceptional.
- 6 Other children.

In the event of over-subscription within any of the above criteria final selection will be based on distance from the child's home to the school, (measured using "Google maps"), priority being given to those living nearest to the school.

The Board of Governors reserves the right to require such supplementary evidence as it may determine to support or verify information on any application form.

The provision of false or incorrect information or the failure to provide information within the deadlines set by primary schools can result in the withdrawal of a place and the inability to offer a place on the part of any school nominated on the applicant's application form.

ADMISSIONS P2-P7

Any child will be admitted within the enrolment number provided such admission is without prejudice to the efficient use of resources.

If there are more applications than places available the above admissions criteria will be applied.

ARRANGEMENTS FOR ADMISSION

During the summer term 2012 children to be admitted to P1 in September 2012 will be invited to the school with their parents to meet the teacher and to be provided with additional information.

Dromore Central Primary School
2 Banbridge Road
Dromore
Co Down
BT25 1AD
Telephone No: (028) 9269 2134
Fax No: (028) 9269 9993
Email: acochrane639@c2kni.net

PRINCIPAL: Mr A J Cochrane, BEd, DASE
CHAIRMAN OF BOARD OF GOVERNORS: Mr W Patterson

Enrolment Number: 668

Admissions Number: 95

	APPLICATIONS		ADMISSIONS	
	Rec	P1	Rec	P1
2009/2010 School Year	-	118	-	107
2010/2011 School Year	-	93	-	93
2011/2012 School Year	-	96	-	96

Actual enrolment in September 2011: 698 pupils aged 4-11 years (Boys/Girls)

Expected enrolment in September 2012: 705 pupils aged 4-11 years (Boys/Girls)

School Management Type: Controlled

ADMISSION

The Board of Governors is conscious of its responsibility to meet the legal requirements placed upon it by The Education Reform (Northern Ireland) Order 1989 in relation to the curriculum. It has therefore been decided that only **children of compulsory school age** will be admitted. If the school's admission and enrolment numbers have not been reached the school will admit all children of compulsory school age whose parents wish them to attend. Any child who reaches his/her fourth birthday on or before 1 July 2012 is of compulsory school age and must receive education from September 2012.

ADMISSIONS CRITERIA

The Board of Governors will apply the following criteria in the order indicated to identify which children should be admitted either at initial admission to education or on transfer from another school. In selecting children for admission children resident in Northern Ireland at the time of their proposed admission to the school will be selected for admission to the school before any child not so resident.

- 1 Children of compulsory school age.
- 2 Children who will have brothers or sisters (half brothers/sisters) attending the school in the 2012/2013 School Year.
- 3 Children whose brothers or sisters previously attended the school.
- 4 Sons or daughters of permanent employees at the school.
- 5 Children for whom the school is the controlled primary school nearest to the child's home.
- 6 Preference will be given to children with exceptional circumstances (medical, social or other problems) that necessitate admission to Dromore Central Primary School, rather than any other primary school. The circumstances should be personal to the child and must be supported by independent and appropriate documentation, providing evidence of the circumstances being exceptional.
- 7 Children whose parent(s) previously attended the school.
- 8 The remaining places will be allocated on the basis of the proximity of the child's home to the school priority being given to those living nearest to the school.

For the purposes of criteria 1-8 inclusive:-

- (a) 'Home' means the address of the parent(s)/guardian(s) as it appears on the electoral register or any record kept for statutory purposes, at the date of completion of the application form; and
- (b) 'Nearest to the child's home' is the distance from the child's home to the school, main entrance gate, as measured on the 1:50000 Ordnance Survey Map, by the nearest road.

Criterion 8 will also be used to discriminate within any oversubscribed criterion (except criterion 1).

The Board of Governors reserves the right to require such supplementary evidence as it may determine to support or verify information on any application form.

The provision of false or incorrect information or the failure to provide information within the deadlines set by this school can result in the withdrawal of a place in this school and the inability to offer a place on the part of any school nominated on the applicant's application form.

ARRANGEMENTS FOR ADMISSION

During the summer term 2012 children to be admitted to P1 in September 2012 will be invited to come to the school with their parents to meet the teacher and to be provided with additional information.

ADMISSION TO Y2 – Y7

Children will be admitted provided the school's enrolment number has not been reached and that the admission of a particular child would not be prejudicial to the efficient use of resources. A maximum class size of 30 will apply in all year groups 1-7.

ADMISSIONS CRITERIA – Y2 TO Y6

The following admission criteria will be used in the event of oversubscription.

Criteria 1 to 8 as for admission to Y1

ADMISSIONS CRITERIA – Y7

Priority will be given to (a) and then (b)

- (a) Children who following a change in permanent residence are living at a location where Dromore Central Primary School is the nearest controlled Primary School to their new permanent residence;
- (b) Other children.

Should sufficient places not be available to admit all applicants meeting (a) or (b), admission criteria 1 to 8 as for P1 will be applied as sub-criteria to identify which child or children is/are to be admitted.

IMPORTANT NOTES

NOTE 1

Inaccurate or misleading information provided on or attached to an application form may prejudice the offer of a place and may lead to the withdrawal of any place awarded to an applicant who has thereby gained an improper advantage.

NOTE 2

In circumstances where a change of residence is not involved the Board of Governors would view with extreme concern an attempt to secure a place unless there existed a very exceptional set of circumstances.

VISITING THE SCHOOL

(a) Entrants to Year 1:

All parents of prospective Year 1 children will be invited to the school to meet their child's class teacher and view the classroom in the term preceding their entry into school.

(b) Entrants who have previously attended another school:-

- (i) An interview will be arranged with the Principal;
- (ii) Parents will be given the opportunity to view the school premises;
- (iii) A meeting can be arranged with the prospective teacher (s) of the child/children.

Drumadonnell Primary School
133 Dromara Road
Ballyroney
Banbridge
BT32 5EY
Telephone No: (028) 4065 0886
Fax No: (028) 4065 0892
Email: kspiers451@c2kni.net

PRINCIPAL: Mr K Spiers, BEd (Hons), PGCE (Ed Man)
CHAIRMAN OF BOARD OF GOVERNORS: Mrs A Hayes

Enrolment Number: 203

Admissions Number: 29

	APPLICATIONS		ADMISSIONS	
	Rec	P1	Rec	P1
2009/2010 School Year	-	32	-	31
2010/2011 School Year	-	25	-	25
2011/2012 School Year	-	31	-	31

Actual enrolment in September 2011: 202 pupils aged 4-11 years (Boys/Girls)
Expected enrolment in September 2012: 200 pupils aged 4-11 years (Boys/Girls)
School Management Type: Controlled

ADMISSION

The following children will be admitted subject to the admission and enrolment numbers not being exceeded.

- (i) Children of compulsory school age (i.e. those who have reached their fourth birthday by 1 July 2012) to be admitted on 1 September 2012.
- (ii) If a nursery class is not in place, children not of compulsory school age who reach their fourth birthday between 2 July 2012 and 22 October 2012 (both dates inclusive) shall be admitted on 22 October 2012 into reception. These children shall be admitted according to chronological order, starting with the oldest. If the admissions number has not been reached additional children, who have reached their fourth birthday but are not of compulsory school age, may be admitted on the first day of the spring term or the first day of the summer term. Again, children shall be admitted according to chronological order.
- (iii) Children who reach their fourth birthday during the Summer Term will be admitted by arrangement with the Principal according to chronological order.

Children not of compulsory school age will only be selected for admission after all children of compulsory school age have been allocated a place.

Children not of compulsory school age may not be admitted if the Department determines that such children will be zero-rated for funding purposes.

ADMISSIONS CRITERIA

The Board of Governors will apply the following criteria to identify which children should be admitted either at initial admission to education or on transfer from another school. In selecting children for admission those resident in Northern Ireland at the time of their proposed admission to the school will be selected for admission to the school before any child not so resident.

- 1 Children of compulsory school age.
- 2 Children who have brothers or sisters in attendance during the 2012/2013 School Year.
- 3 Children whose brothers and sisters previously attended this school.
- 4 Sons or daughters of permanent employees at the school.
- 5 Children for whom the school is the controlled school nearest to their home.

6 Preference may be given to children with exceptional circumstances (medical, social or other problems) that necessitate admission to Drumadonnell Primary School rather than any other primary school. The circumstances should be personal to the child and must be supported by independent and appropriate documentation, providing evidence of the circumstances being described as exceptional.

7 Other children

In the event of over-subscription within any of the listed criteria, final selection will be determined by distance from the child's home to the school, priority being given to those living closest to the school. Distance will be measured using Google Maps Distance Calculator.

Applicants should note that they may be required to produce documents verifying their address.

The Board of Governors reserves the right to require such supplementary evidence as it may determine to support or verify information on any form. The provision of false or incorrect information or the failure to provide information within the deadlines set by primary schools can result in the withdrawal of a place and the inability to offer a place on the part of any school nominated on the applicant's application form.

ADMISSION P2-P7

Any child will be admitted within the enrolment number provided such admission is without prejudice to the efficient use of resources.

If there are more applications than places available the criteria for admission to P1 will be applied.

ARRANGEMENTS FOR ADMISSION

During the summer term 2012 children to be admitted to P1 in September 2012 will be invited to the school, with their parents, to meet the teacher and to be provided with additional information. Similar meetings will be arranged for children not of compulsory school age who may be admitted during the school year.

Edenderry Primary School
Lurgan Road
Banbridge
BT32 4AF
Telephone No: (028) 4062 2082
Fax No: (028) 4062 8605
Email: info@edenderry.banbridge.ni.sch.uk

PRINCIPAL: Mr S J Wilson, BEd, MEd
CHAIRMAN OF BOARD OF GOVERNORS: Mr T. McClimonds

Enrolment Number: 420

Admissions Number: 60

	APPLICATIONS		ADMISSIONS	
	Rec	P1	Rec	P1
2009/2010 School Year	-	60	-	59
2010/2011 School Year	-	54	-	54
2011/2012 School Year	-	60	-	60

Enrolment in September 2010: 428 pupils aged 4-11 years (Boys/Girls)
Expected enrolment in September 2012: 428 pupils aged 4-11 years (Boys/Girls)
School Management Type: Controlled

ADMISSION

The Board of Governors is conscious of its responsibility to meet the legal requirements placed upon it by The Education Reform (Northern Ireland) Order 1989 in relation to the curriculum. It has therefore been decided that only **children of compulsory school age** will be admitted. If the school's admission and enrolment numbers have not been reached the school will admit all children of compulsory school age whose parents wish them to attend. Any child who reaches his/her fourth birthday on or before 1 July 2012 is of compulsory school age and must receive education from September 2012.

Inaccurate or misleading information provided on or attached to an application may prejudice the offer of a place and may lead to the withdrawal of any place awarded to an applicant who has thereby gain an improper advantage. The Board of Governors reserves the right to require such supplementary evidence as it may determine to support or verify information on any application form.

ADMISSIONS CRITERIA

The Board of Governors will apply the following criteria to identify which children should be admitted either at initial admission to education or on transfer from another school. In selecting children for admission children resident in Northern Ireland at the time of their proposed admission to the school will be selected for admission to the school before any child not so resident.

- 1 Children of compulsory school age.
- 2 Places will be offered to children of compulsory school age whose brother or sister or half-brother or half-sister are attending the school or had been in attendance within the past two years.
- 3 Children of members of staff in permanent employment in the school.
- 4 Those who place Edenderry Primary School as first preference on the application form.
- 5 Preference will be given to children with exceptional circumstances (medical, social or other problems) that necessitate admission to Edenderry Primary School rather than any other primary school. The circumstances should be personal to the child and must be supported by independent and appropriate documentation, providing evidence of the circumstances being described as being exceptional.
- 6 Proximity of the geographical location of the child's home to the school as determined by a radial measurement from the school.

Criterion 6 will also be used to discriminate within any oversubscribed criterion (except criterion 1).

The Board of Governors reserves the right to require such supplementary evidence as it may determine to support or verify information on any application form.

The provision of false or incorrect information or the failure to provide information within the deadlines set by primary schools can result in the withdrawal of a place and the inability to offer a place on the part of any school nominated on the applicant's application form.

Birth certificates should be enclosed at the time of application. Applicants will be contacted should the Board of Governors require verification.

Admissions to P2 - P7 will be considered providing the school's total enrolment and class size criteria have not been reached.

Fair Hill Primary School
4 Tullyniskey Road
Kinallen
Dromara
Dromore
Co Down
BT25 2PJ
Telephone No: (028) 9753 2553
Fax No: (028) 9753 2907
Email: cclinghan710@c2kni.net

PRINCIPAL: Mrs C E Clinghan
CHAIRMAN OF BOARD OF GOVERNORS: Ms W McMaster

Enrolment Number: 280

Admissions Number: 41

	APPLICATIONS		ADMISSIONS	
	Rec	P1	Rec	P1
2009/2010 School Year	-	40	-	40
2010/2011 School Year	-	47	-	47
2011/2012 School Year	-	40	-	40

Actual enrolment in September 2011: 263 pupils aged 4-11 years (Boys/Girls) + 26 Nursery
Expected enrolment in September 2012: 272 pupils aged 4-11 years (Boys/Girls) + 26 Nursery
School Management Type: Controlled

The Board of Governors is conscious of its responsibility to meet the legal requirements placed upon it by The Education Reform (Northern Ireland) Order 1989 in relation to the curriculum. It has therefore been decided that only **children of compulsory school age** will be admitted. If the school's admission and enrolment numbers have not been reached the school will admit all children of compulsory school age whose parents wish them to attend. Any child who reaches his/her fourth birthday on or before 1 July 2012 is of compulsory school age and must receive education from September 2012.

The Board of Governors reserves the right to require such supplementary evidence as it may determine to support or verify information on any application form.

The provision of false or incorrect information or the failure to provide information within the deadlines set by primary schools can result in the withdrawal of a place and the inability to offer a place on the part of any school nominated on the applicant's application form.

ADMISSIONS CRITERIA

Should the enrolment number or admissions number be exceeded the Board of Governors will apply the following criteria to identify which pupils are to be admitted to P1. In selecting children for admission children resident in Northern Ireland at the time of their proposed admission to the school will be selected for admission to the school before any child not so resident.

CHILDREN OF COMPULSORY SCHOOL AGE

- 1 Children who will have brothers or sisters in attendance at Fair Hill Primary School during the 2012/2013 School Year or have had a brother/sister previously in attendance at the school.
- 2 Children for whom Fair Hill Primary School or the former Carnew or Gransha or Kinallen Primary School is the nearest Controlled Primary School to the child's home.
- 3 Children for whom Fair Hill Primary School or the former Carnew or Gransha or Kinallen Primary School is not the nearest Controlled Primary School to the child's home.

In the event of the number of applicants meeting criterion 1 or criterion 2 or criterion 3 being greater than the number of places available the following sub-criteria will be applied as appropriate in the indicated order to identify the children to be selected:-

- (i) The eldest child in a family or an only child;

- (ii) Sons or daughters of permanent employees at the school;
- (iii) Other children.

Should over-subscription occur when a particular sub-criterion is applied priority will be given to those children living closest to the school. School in this context is interpreted as the nearest of the following to the child's home: Fair Hill Primary School or the former Carnew or Gransha or Kinallen Primary School.

ADMISSION TO P2 - P7 CLASSES

Any child will be admitted within the enrolment number provided such admission is without prejudice to the efficient use of any resources, and provided the class maximum size of 30 pupils is upheld.

Any child who holds a statement of special needs can only be admitted through the Southern Education and Library Board.

ADMISSIONS CRITERIA (P2-P7 CLASSES)

The following admissions criteria will be applied in the indicated order by the Principal on behalf of and with the authority of the Board of Governors. In selecting children for admission children resident in Northern Ireland at the time of their proposed admission to the school will be selected for admission to the school before any child not so resident.

- 1 Children who have moved into the area after 30 April 2012 and for whom Fair Hill Primary School or the former Carnew or Gransha or Kinallen Primary School is the nearest Controlled Primary School to their home.
- 2 Children who moved into the area during the period 1 September 2011 to 30 April 2012 (both dates inclusive) and for whom Fair Hill Primary School or the former Carnew or Gransha or Kinallen Primary School is the nearest Controlled Primary School to their home.
- 3 Other children for whom Fair Hill Primary School or the former Carnew or Gransha or Kinallen Primary School is the nearest Controlled Primary School to their home.
- 4 Children for whom Fair Hill Primary School or the former Carnew or Gransha or Kinallen Primary School is not the nearest Controlled Primary School to their home.

In the event of the number of applicants meeting criterion 1 or criterion 2 or criterion 3 or criterion 4 being greater than the number of places available the same sub-criteria (i) to (iii) as for P1 applicants will be applied to identify the children to be selected for admission.

NOTE

1. Distances will be measured 'as the crow flies' on an Ordnance Survey map.
2. Home is the normal place of residence of the child. It is not the child minder's home or the home of a relative.
3. If a child is selected for admission on the basis of false or inaccurate information provided to the Board of Governors by or on behalf of the parents, the Board of Governors reserves the right to withdraw the offer of admission to the school.

Gilford Primary School
Castle Hill
Gilford
Craigavon
BT63 6HH
Telephone/Fax No: (028) 3883 1372
Email: darmstrong093@craigavonps.gilford.ni.sch.uk

PRINCIPAL: Mrs D Armstrong, BEd
CHAIRMAN OF BOARD OF GOVERNORS: Mr R Leckey

Enrolment Number: 173

Admissions Number: 25

	APPLICATIONS		ADMISSIONS	
	Rec	P1	Rec	P1
2009/2010 School Year	-	5	-	5
2010/2011 School Year	-	5	-	5
2011/2012 School Year	-	11	-	11

Actual enrolment in September 2011: 78 pupils aged 4-11 years (Boys/Girls)
Expected enrolment in September 2012: 85 pupils aged 4-11 years (Boys/Girls)
School Management Type: Controlled

ADMISSION

The Board of Governors is conscious of its responsibility to meet the legal requirements placed upon it by The Education Reform (Northern Ireland) Order 1989 in relation to the curriculum. It has therefore been decided that only **children of compulsory school age** will be admitted. If the school's admission and enrolment numbers have not been reached the school will admit all children of compulsory school age whose parents wish them to attend. Any child who reaches his/her fourth birthday on or before 1 July 2012 is of compulsory school age and must receive education from September 2012.

ADMISSIONS CRITERIA

The Board of Governors will apply the following criteria to identify which children should be admitted at initial admission to education, admissions to year one after beginning of school year and on transfer from another school (Years 2-7). In selecting children for admission children resident in Northern Ireland at the time of their proposed admission to the school will be selected for admission to the school before any child not so resident.

- 1 Children of compulsory school age.
- 2 Children who will have brothers or sisters in attendance during the 2012/2013 School Year.
- 3 Children whose brothers and sisters previously attended the school.
- 4 Sons or daughters of permanent employees at the school.
- 5 Children transferring from the Nursery Unit (year one only).
- 6 Children for whom the school is the controlled primary school nearest to their home.
- 7 Children with special circumstances (social, medical or security). The special circumstances must be made known at the time of application. The Board of Governors reserves the right to seek confirmation of the special circumstances from a statutory body.
- 8 The remaining places will be allocated on the basis of the proximity of the child's home to the school, priority being given to those nearest to the school.

Criterion 8 will also be used to discriminate within any oversubscribed criterion (except criterion 1).

ARRANGEMENTS FOR ADMISSION

During the summer term 2012 children to be admitted to P1 in September 2012 will be invited to come to the school with their parents to meet the teacher and to be provided with additional information.

Iveagh Primary School
17 Castle Hill
Rathfriland
Co Down
BT34 5NH
Telephone No: (028) 4063 0639
Fax No: (028) 4063 8763
Email: pvance@iveagh.rathfriland.ni.sch.uk

PRINCIPAL: Mr P G Vance
CHAIRMAN OF BOARD OF GOVERNORS: Mrs M M E Harbinson, BA

Enrolment Number: 274

Admissions Number: 39

	APPLICATIONS		ADMISSIONS	
	Rec	P1	Rec	P1
2009/2010 School Year	13	16	13	16
2010/2011 School Year	15	27	15	27
2011/2012 School Year	12	27	12	27

Actual enrolment in September 2011: 232 pupils aged 4-11 years (Boys/Girls)
Expected enrolment in September 2012: 235 pupils aged 4-11 years (Boys/Girls)
School Management Type: Controlled

ADMISSION

If the school's admission and enrolment numbers have not been reached the school will admit all children of the appropriate age whose parents wish them to attend the school. These are:

- i those of compulsory school age (children who reach their fourth birthday on or before 1 July 2012);
- ii those who reach their fourth birthday between 2 July and 31 October 2012 (both dates inclusive) to be admitted by 31 October 2012.

The school will continue to admit children not of compulsory school age as above, unless the Department determines that such children will be zero-rated for funding purposes.

Children who are not of compulsory school age will only be selected for admission after all children of compulsory school age have been allocated a place.

Children who reach their fourth birthday after 31 October 2012 will normally be considered for enrolment at the start of the new term after their birthday providing admission does not adversely affect the education of other children within the school.

ADMISSIONS CRITERIA

The Board of Governors will apply the following criteria to identify which children should be admitted either at initial admission to education or on transfer from another school. In selecting children for admission children resident in Northern Ireland at the time of their proposed admission to the school will be selected for admission to the school before any child not so resident.

- 1 Children of compulsory school age.
- 2 Children who will have brother or sister in attendance during the 2012/2013 School Year.
- 3 Children whose brothers or sisters previously attended the school.
- 4 Sons or daughters of permanent employees of the school.
- 5 The remaining places will be allocated on the basis of the proximity of the child's home to school, priority being given to those living nearest to the school (as measured in a straight line on an Ordnance Survey Map from house to school gate).

Criterion 5 will also be used to discriminate within any oversubscribed criterion (except Criterion 1).

The Board of Governors reserves the right to require such supplementary evidence as it may determine to support or verify information on any application form.

The provision of false or incorrect information or the failure to provide information within the deadlines set by primary schools can result in the withdrawal of a place and the inability to offer a place on the part of any school nominated on the applicant's application form.

ADMISSION ARRANGEMENTS

Prospective parents, alone or accompanied by children, who may wish to visit the school, can do so by arrangement with the Principal. All parents and children will be invited to meet the Principal and teachers in June 2012 (P1), or September 2012 (Reception). At these meetings parents will be provided with additional information including the date and time children will be enrolled.

By applying to the school, parents have indicated a preference for this school and thus are signifying an acceptance of its aims, philosophy and standards.

ADMISSION OF PUPILS TO CLASSES P2 – P7

Children will be admitted to classes P2 – P7 using the admission criteria already stated, normally up to a maximum class size of:-

- a. 35 for a single class group (P5 – P7)
- b. 30 for a single class group (P2 – P4)
- c. 30 for a composite class

Milltown Primary School
167 Lurgan Road
Banbridge
BT32 4NR
Telephone/Fax No: (028) 4062 4207
Email: info@milltown.banbridge.ni.sch.uk

PRINCIPAL: Miss C Garrett BEd, Adv Dip Ed
CHAIRMAN OF BOARD OF GOVERNORS: Mr W A Mateer

Enrolment Number: 87

Admissions Number: 12

	APPLICATIONS		ADMISSIONS	
	Rec	P1	Rec	P1
2009/2010 School Year	-	9	-	9
2010/2011 School Year	-	4	-	4
2011/2012 School Year	-	9	-	9

Actual enrolment in September 2011: 50 pupils aged 4-11 years (Boys/Girls)
Expected enrolment in September 2012: 50 pupils aged 4-11 years (Boys/Girls)
School Management Type: Controlled

ADMISSION

The Board of Governors is conscious of its responsibility to meet the legal requirements placed upon it by The Education Reform (Northern Ireland) Order 1989 in relation to the curriculum. It has therefore been decided that only **children of compulsory school age** will be admitted. If the school's admission and enrolment numbers have not been reached the school will admit all children of compulsory school age whose parents wish them to attend. Any child who reaches his/her fourth birthday on or before 1 July 2012 is of compulsory school age and must receive education from September 2012.

ADMISSIONS CRITERIA

The Board of Governors will apply the following criteria in the order indicated to identify which children should be admitted either at initial admission to education (P1) or on transfer from another school. In selecting children for admission children resident in Northern Ireland at the time of their proposed admission to the school will be selected for admission to the school before any child not so resident.

- 1 Children who will have brothers or sisters in attendance during the 2012/2013 School Year.
- 2 Children whose brothers and sisters previously attended the school.
- 3 Sons or daughters of permanent employees at the school.
- 4 Children for whom the school is the controlled primary school nearest to their home.
- 5 Children with exceptional circumstances (medical, social or other problems) that necessitate admission to Milltown Primary School rather than any other primary school. The circumstances should be personal to the child and must be supported by independent and appropriate documentation, providing evidence of the circumstances being described as being exceptional.
- 6 Proximity of the child's home to the school, priority being given to those living nearest to the school as measured by public road.

Criterion 6 will also be used to discriminate within any oversubscribed criterion.

The Board of Governors reserves the right to require such supplementary evidence as it may determine to support or verify information on any application form. The provision of false or incorrect information or the failure to provide information within the deadlines set by primary schools can result in the withdrawal of a place and the inability to offer a place on the part of any school nominated on the applicant's application form.

ARRANGEMENTS FOR ADMISSION

During the summer term, parents of children to be admitted to P1 in September will be invited to come to the school to meet the teacher and to be provided with additional information. Children will also have the opportunity to visit the infant classroom.

ADMISSION OF PUPILS TO CLASSES P2-P7

Admission to P2-P7 will be made providing the school's total enrolment number has not been exceeded and provided such admission is without prejudice to the efficient use of any resources.

Moyallon Primary School
103 Moyallon Road
Portadown
Co Armagh
BT63 5JY
Telephone No: (028) 3883 1649
Website: www.moyallonps.co.uk
Email: jpriestley374@c2kni.net

PRINCIPAL: Mr J Priestley, BEd
CHAIRMAN OF BOARD OF GOVERNORS: Mr G Mullan

Enrolment Number: 204

Admissions Number: 29

	APPLICATIONS		ADMISSIONS	
	Rec	P1	Rec	P1
2009/2010 School Year	-	30	-	29
2010/2011 School Year	-	31	-	29
2011/2012 School Year	1	33	-	31

Actual enrolment in September 2011: 189 pupils aged 4-11 years (Boys/Girls)
 Expected enrolment in September 2012: 198 pupils aged 4-11 years (Boys/Girls)
 School Management Type: Controlled

ADMISSION

The Board of Governors is conscious of its responsibility to meet the legal requirements placed upon it by The Education Reform (Northern Ireland) Order 1989 in relation to the curriculum. It has therefore been decided that only children of compulsory school age will be admitted. If the school's admission and enrolment numbers have not been reached the school will admit all children of compulsory school age whose parents wish them to attend. Any child who reaches his/her fourth birthday on or before 1 July 2012 is of compulsory school age and must receive education from September 2012.

ADMISSIONS CRITERIA

The Board of Governors will apply the following criteria to identify which children should be admitted either at initial admission to education or on transfer from another school. In selecting children for admission children resident in Northern Ireland at the time of their proposed admission to the school will be selected for admission to the school before any child not so resident.

- 1 Children who will have brother(s) or sister(s) in attendance during the 2012/2013 School Year.
- 2 Sons or daughters of permanent employees at the school.
- 3 Children who have had an older brother or sister formerly attending the school.
- 4 Children for whom the school is the controlled primary school nearest to their home.
- 5 Children with special circumstances (social, medical or security). The special circumstances must be made known at the time of application. The Board of Governors reserves the right to seek confirmation of the special circumstances from a statutory body.
- 6 The remaining places will be allocated on the basis of the proximity of the child's home to the school, priority being given to those living nearest to the school. (Distance will be measured on Google Maps UK). If the final places to be allocated have identical measurements as identified by Google Maps UK, selection will be on the basis of alphabetical order of surname, then forename, then middle name.

If there are within any criterion, more applications lodged than places available the following sub-criteria will be applied in the order indicated:-

- (i) brother or sister who previously attended the school;
- (ii) father or mother who previously attended the school;

- (iii) proximity of the child's home to the school, priority being given to those living nearest to the school. (Distance will be measured on Google Maps UK). If the final places to be allocated have identical measurements as identified by Google Maps UK, selection will be on the basis of alphabetical order of surname, then forename, then middle name.

ADMISSION TO P2 - P7

A request for enrolment in P2 - P7 will be considered, providing that the total enrolment number of 204 has not been exceeded and that additional enrolments would not put undue pressure on individual class sizes.

If a place is available then a child will be enrolled in a class appropriate to his/her age upon receipt of Transfer Certificate from the school previously attended.

The criteria for admission to P1 will be applied in the case of over-subscription.

ARRANGEMENTS FOR ADMISSION

During the summer term 2012 children to be admitted to P1 in September 2012 will be invited to come to the school with their parents to meet the teacher and to be provided with additional information.

Scarva Primary School
80 Main Street
Scarva
Craigavon
BT63 6NS
Telephone No: (028) 3883 1645
Email: hlindsay705@scarvaps.scarva.ni.sch.uk

PRINCIPAL: Mrs H J Lindsay, BEd (Hons)
CHAIRMAN OF BOARD OF GOVERNORS: Rev P McBride BEd BD

Enrolment Number: 100

Admissions Number: 14

	APPLICATIONS		ADMISSIONS	
	Rec	P1	Rec	P1
2009/2010 School Year	-	7	-	7
2010/2011 School Year	-	5	-	5
2011/2012 School Year	-	15	-	15

Actual enrolment in September 2011: 60 pupils aged 4-11 years (Boys/Girls)
Expected enrolment in September 2012: 60 pupils aged 4-11 years (Boys/Girls)
School Management Type: Controlled

ADMISSION

If the school's admissions and enrolment numbers have not been reached the school will admit all children of the appropriate age whose parents wish them to attend.

These children are those of compulsory school age (children who reach their fourth birthday on or before 1 July 2012) - to be admitted 3 September 2012.

ADMISSIONS CRITERIA

The Board of Governors will apply the following criteria to identify which children should be admitted either at initial admission to education or on transfer from another school. In selecting children for admission children resident in Northern Ireland at the time of their proposed admission to the school will be selected for admission to the school before any child not so resident. The admission criteria will be applied by the Principal on behalf of and with the authority of the Board of Governors.

The Board of Governors reserves the right to require such supplementary evidence as it may determine to support or verify information on any application form.

The provision of false or incorrect information or the failure to provide information within the deadlines set by primary schools can result in the withdrawal of a place and the inability to offer a place on the part of any school nominated on the applicant's application form.

CHILDREN OF COMPULSORY SCHOOL AGE

1. Children of compulsory school age.
2. Children who will have sibling relations in attendance during the 2012/2013 School Year.
3. Children whose sibling relations previously attended the school.
4. Sons or daughters of permanent employees at the school.
5. Children for whom the school is the controlled primary school nearest to their home as measured in a straight line on an Ordnance Survey Map.
6. Preference will be given to children with exceptional circumstances (medical, social or other problems) that necessitate admission to Scarva Primary School rather than any other primary school. The circumstances should be personal to the child and must be supported by independent and appropriate documentation, providing evidence of the circumstances being described as being exceptional.

7. Other children.

Where a particular criterion except 1 is oversubscribed consideration will be given firstly to children to whom special circumstances apply and secondly to the proximity of the child's home to the school. Priority being given to those living nearest to the school as measured in a straight line on an Ordnance Survey Map.

ARRANGEMENTS FOR ADMISSION

Scarva Primary School aims to encourage and assist parental interest in their child's progress and development, and in the life of the school. Parents who are considering sending their child to the school are therefore invited to visit and discuss with the Principal the various matters which may concern them.

By applying to Scarva Primary School, parents indicate a preference for this school and thus are signifying an acceptance of its aims, philosophy and standards.

During the term before enrolment, parents and children are invited to attend the New Intake Meeting to give them the opportunity to meet the Primary 1 teacher and to become familiar with the school and its environment.

All parents are invited to come to school on an appointment basis to meet their child's class teacher and to discuss their child's Report and progress.

Parents are invited to attend various displays, services and activities in school throughout the year.

ADMISSION OF PUPILS TO CLASSES P2-7

Admission to P2-P7 will be made providing the school's total enrolment number has not been exceeded; provided such admission is without prejudice to the efficient use of resources and that the class maximum size of 30 is upheld at Key Stage 1.

St Colman's Primary School
Annaclone
BANBRIDGE
BT32 5LS
Telephone No: (028) 4067 1363
Fax No: (028) 4067 1363
Email: info@stcolmans.annaclone.ni.sch.uk

PRINCIPAL: K Donaghy, BSc (Hons), PGCE, MED
CHAIRMAN OF BOARD OF GOVERNORS: Mr J Higgins

Enrolment Number: 134

Admissions Number: 19

	APPLICATIONS		ADMISSIONS	
	Rec	P1	Rec	P1
2009/2010 School Year	17	8	15	8
2010/2011 School Year	20	7	16	7
2011/2012 School Year	*	9	*	8

* Reception class replaced with a nursery unit in September 2011.

Actual enrolment in September 2011: 130 (including 2 statemented) pupils aged 4-11 years (Boys/Girls)
Expected enrolment in September 2012: 134 (including 1 statemented) pupils aged 4-11 years (Boys/Girls)
School Management Type: Maintained

The Board of Governors will apply the following criteria to identify which children should be admitted either at initial admission to education or on transfer from another school. In selecting children for admission children resident in Northern Ireland at the time of their proposed admission to the school will be selected for admission to the school before any child not so resident.

ADMISSIONS POLICY

If the school's admission and enrolment numbers have not been reached the school will admit all children of the appropriate age whose parents wish them to attend the school. These children are those of compulsory school age (children who reach their fourth birthday on or before 1 July 2012).

ADMISSIONS CRITERIA

In the event of over-subscription the following criteria will be applied in the order set down.

- 1 Children who reside in the Parish of Annaclone, All Saints, Ballela and The Corbet or for whom St Colman's Annaclone is the nearest school.
- 2 Children who have brothers or sisters attending the school.
- 3 Children whose brothers or sisters have previously attended the school.
- 4 Sons or daughters of permanent employees of the school.
- 5 Children who reside outside the Parish of Annaclone, All Saints, Ballela and The Corbet or for whom St Colman's Annaclone is not the nearest school.
- 6 The remaining places will be allocated on the basis of the proximity of the child's home to the school, priority being given to those living nearest to the school as measured by shortest walking distance by public road.

In the event that there are fewer applicants complying with a particular criterion than there are places available or remaining those applicants complying with that criterion will be admitted and the next criterion will be applied to the remaining applicants.

In the event that there are more applicants, complying with a particular criterion than there are places available or remaining those applicants complying with that criterion will go forward to be considered under the next criterion and those not complying with that criterion will be eliminated.

ARRANGEMENTS FOR ADMISSION

Parents of new entrants must furnish the school Principal with the pupil's birth certificate before a pupil may be enrolled in the school.

Birth certificates will be photocopied and returned to parents.

Parents of pupils not baptised in the Parish of Annaclone must obtain a baptismal certificate from the parish of the pupil's baptism. This baptismal certificate must be with the Principal before such pupils can be presented for First Holy Communion and/or the Sacrament of Confirmation.

The provision of false or incorrect information or the failure to provide verifying documents according to the required deadline may result in either the withdrawal of a place or the inability of a primary school to offer a place.

During the Summer Term children admitted to P1 in the following September will be invited to the school to meet the teacher and Principal and to provide additional information.

St Colman's Primary School
47 Gallow's Street
Dromore
BT25 1BD
Telephone No: (028) 9269 2628
Fax No: (028) 9269 2628
Email: info@stcolmans.dromore.ni.sch.uk

PRINCIPAL: Mr G McBrien, MEd, BEd Hons
CHAIRMAN OF BOARD OF GOVERNORS: TBA

Enrolment Number: 145

Admission Number: 21

	APPLICATIONS		ADMISSIONS	
	Rec	P1	Rec	P1
2009/2010 School Year	-	15	-	15
2010/2011 School Year	-	17	-	17
2011/2012 School Year	-	11	-	11

Actual enrolment in September 2011: 86 pupils aged 4-11 years (Boys/Girls)
Expected enrolment in September 2012: 84 pupils aged 4-11 years (Boys/Girls)
School Management Type: Maintained

ADMISSION

If the school's admission and enrolment numbers have not been reached the school will admit all children of the appropriate age whose parents wish them to attend the school. These children are those of compulsory school age (children who reach their fourth birthday on or before 1 July 2012).

ADMISSIONS CRITERIA

The Board of Governors will apply the following criteria to identify which children should be admitted either at initial admission to education or on transfer from another school. In selecting children for admission children resident in Northern Ireland at the time of their proposed admission to the school will be selected for admission to the school before any child not so resident.

The Board of Governors reserves the right to require such supplementary evidence as it may determine to support or verify information on any application form.

The provision of false or incorrect information or the failure to provide information within the deadlines set by primary schools can result in the withdrawal of a place and the inability to offer a place on the part of any school nominated on the applicant's application form.

CHILDREN OF COMPULSORY SCHOOL AGE

- 1 Children of compulsory school age who normally reside within the traditional intake area of St Colman's.
- 2 Children of compulsory school age from other parishes.

If oversubscribed the following sub-criteria will be applied:-

- (a) Children whose brother/sister half-brother/half sister are enrolled in the school during the 2012/2013 School Year;
- (b) Children whose brother/sister half-brother/half sister were previously enrolled in the school;
- (c) Children whose parent/guardian is presently a permanent member of the school teaching/ancillary/auxiliary staff;
- (d) Children whose parent/guardian previously attended the school;
- (e) Preference will be given to children with exceptional circumstances (medical, social or other problems) that necessitate admission to St Colman's PS, Dromore rather than any other primary school. The circumstances

should be personal to the child and must be supported by independent and appropriate documentation, providing evidence of the circumstances being described as being exceptional.

- (f) The remaining places will be allocated on the basis of the proximity of the child's home to the school, priority being given to those living nearest to the school;

Sub-criterion (f) will also be used to discriminate within any oversubscribed sub-criterion.

ARRANGEMENTS FOR ADMISSION

During the Summer Term 2012 children to be admitted to P1 in September 2012 will be invited to the school with their parents to meet the teacher and to be provided with additional information.

Children to be admitted will be invited to the school with parents early in the Autumn Term to meet the teacher and be provided with additional information.

St Colman's Bann Primary School
10 Drumnascamph Road
Laurencetown
CRAIGAVON
BT63 6DU

Telephone No: (028) 4062 2074

Fax No: (028) 4062 2250

Email: jmonaghan@stcolmans.bann.ni.sch.uk

PRINCIPAL: Mr J Monaghan, BEd, DASE, MEd
CHAIRMAN OF BOARD OF GOVERNORS: Mr Gary Byrne

Enrolment Number: 131

Admissions Number: 19

	APPLICATIONS		ADMISSIONS	
	<i>Rec</i>	<i>PI</i>	<i>Rec</i>	<i>PI</i>
2009/2010 School Year	-	13	-	13
2010/2011 School Year	-	18	-	17
2011/2012 School Year	-	13	-	12

Actual enrolment in September 2011: 94 pupils aged 4-11 years (Boys/Girls)

Expected enrolment in September 2012: 100 pupils aged 4-11 years (Boys/Girls)

School Management Type: Maintained

ADMISSION

If the school's admissions and enrolment numbers have not been reached the school will admit all children of the appropriate age whose parents wish them to attend the school. These children are those of compulsory school age (children who reach their fourth birthday on or before 1 July 2012).

ADMISSIONS CRITERIA

The following criteria will be used in deciding which children should be admitted either at initial admission to education or on transfer from another school. In selecting children for admission children resident in Northern Ireland at the time of their proposed admission to the school will be selected for admission to the school before any child not so resident.

1. Children of compulsory school age.
2. Children who will have brothers or sisters in attendance during the 2012/2013 School Year.
3. Children whose brothers and sisters previously attended the school.
4. Sons or daughters of permanent employees at the school.
5. Children for whom the school is the Catholic maintained primary school nearest to their home.
6. Children with special circumstances (social, medical or security). The special circumstances must be made known at the time of application, preferably in writing. The Board of Governors reserves the right to seek confirmation of the special circumstances from a statutory body.
7. The remaining places will be allocated on the basis of the proximity of the child's home to school, priority being given to those living nearest to the school.

Criterion 7 will also be used to discriminate within any oversubscribed criterion (except criterion 1).

ARRANGEMENTS FOR ADMISSION

During the summer term 2012 children to be admitted to P1 in September 2012 will be invited to the school with their parents to meet the teacher and to be provided with additional information.

St Francis' Primary School, Aghaderg
24 Donard View Road
Loughbrickland
Banbridge
BT32 3LN
Telephone/Fax No: (028) 4062 8044
Email: info@stfrancis.aghaderg.ni.sch.uk

PRINCIPAL: Mr D McNally
CHAIRPERSON OF BOARD OF GOVERNORS: Rev. Fr. Colum Wright P.P.

Enrolment Number: 145

Admissions Number: 21

	APPLICATIONS		ADMISSIONS	
	Rec	P1	Rec	P1
2009/2010 School Year	-	18	-	18
2010/2011 School Year	-	30	-	27
2011/2012 School Year	-	23	-	22

Actual enrolment in September 2011: 153 pupils aged 4-11 years (Boys/Girls)
Expected enrolment in September 2012: 154 pupils aged 4-11 years (Boys/Girls)
School Management Type: Maintained

ADMISSION

If the school's admissions and enrolment numbers have not been reached the school will admit all children of the appropriate age (those who will reach their 4th birthday on or before 1 July 2012) whose parents wish them to attend the school. **The school will no longer admit children not of compulsory school age** as the Department has determined that such children will be zero-rated for funding purposes.

ADMISSIONS CRITERIA

The Board of Governors will apply the following criteria to identify which children should be admitted either at initial admission to education or on transfer from another school. Admission to Primary 2 to Primary 7 and admission to Primary 1 later in the school year are subject to the enrolment number not being exceeded and to any admission not being prejudicial to the efficient use of resources. In selecting children for admission, children resident in Northern Ireland at the time of their proposed admission to the school will be selected for admission to the school before any child not so resident.

- 1 Children of compulsory school age who normally reside in the parish of Aghaderg.
- 2 Children of compulsory school age who reside in other areas.

In the event of over-subscription in any one of the criteria, taken in order, the following sub-criteria will be applied in the order set down:

- i Children who have brothers/sisters (half brothers/sisters) currently enrolled in the school or who attended the school.
- ii Eldest child in the family eligible to enrol at St Francis' Primary School, Aghaderg.
- iii Children whose parent/guardian, brother/sister are prior pupils of the school, or former parish schools.
- iv Children whose parent/guardian is presently a permanent member of the school teaching/ancillary/auxiliary staff.
- v Proximity of the child's home to the school, priority being given to those living nearest the school. (To be measured by driving distance on the public road from the main entrance of the child's home to the main entrance of St Francis' Primary School, Aghaderg).

Applicants should note that they may be required to produce documents verifying their address.

ARRANGEMENT FOR ADMISSION

During the summer term 2012 children to be admitted to P1 in September 2012 will be invited to the school with their parents to meet the teacher and to be provided with additional information.

St John's Primary School
Castle Hill
Gilford
Craigavon
BT63 6HH
Telephone No: (028) 3883 1555
Email: info@stjohns.gilford.ni.sch.uk

PRINCIPAL: Miss C McCooe, BEd (Hons), MEd
CHAIRMAN OF BOARD OF GOVERNORS: Mr Charles McConville

Enrolment Number: 172

Admissions Number: 25

	APPLICATIONS		ADMISSIONS	
	Rec	P1	Rec	P1
2009/2010 School Year	-	21	-	21
2010/2011 School Year	-	22	-	22
2011/2012 School Year	-	19	-	18

Actual enrolment in September 2011: 125 pupils aged 4-11 years (Boys/Girls)
Expected enrolment in September 2012: 128 pupils aged 4-11 years (Boys/Girls)
School Management Type: Maintained

ADMISSION

If the school's admissions and enrolment numbers have not been reached the school will admit all children of the appropriate age whose parents wish them to attend the school. These children are those of compulsory school age (children who reach their fourth birthday on or before 1 July 2012).

ADMISSIONS CRITERIA

In any year when the admission or enrolment number is exceeded the Governors will use the following criteria in deciding which pupils should be admitted both at the initial enrolment stage and any other on transfer from another school. In selecting children for admission children resident in Northern Ireland at the time of their proposed admission to the school will be selected for admission to the school before any child not so resident.

The Board of Governors reserves the right to require such supplementary evidence as it may determine to support or verify information on any application form.

The provision of false or incorrect information or the failure to provide information within the deadlines set by primary schools can result in the withdrawal of a place and the inability to offer a place on the part of any school nominated on the applicant's application form.

- 1 Children of compulsory age who normally reside in the Parish.
- 2 Children of compulsory age from outside the Parish.

In the event of over-subscription in any one of the criteria taken in order, the following sub-criteria will be applied in the order set down. If over-subscribed in any one of the sub-criteria taken in order, final selection will be on the basis of the closeness of the home to the school as measured by the shortest walking distance. Priority will be given to those living nearest the school.

- (a) Children who have brother/sister (half-brother/sister) presently enrolled in the school.
- (b) Children whose parent/guardian, brother/sister (half-brother/sister) are former pupils of the school.
- (c) Children whose parent/guardian is presently a permanent member of the school/ancillary/auxiliary staff.
- (d) Preference will be given to children with exceptional circumstances (medical, social or other problems) that necessitate admission to St John's PS, Gilford rather than any other primary school. The circumstances should be personal to the child and must be supported by independent and appropriate documentation, providing evidence of the circumstances being described as being exceptional.

ARRANGEMENTS FOR ADMISSION

During the summer term 2012 children to be admitted to P1 in September 2012 will be invited to the school with their parents to meet the teacher and to be provided with additional information.

St Mary's Primary School
Reilly Park
Banbridge
Co Down
BT32 3DJ
Telephone No: (028) 4066 2572
Fax No: (028) 4062 6545
Email: info@stmarys.banbridge.ni.sch.uk
Web: www.stmarysbanbridge.co.uk

PRINCIPAL: Mr D O'Hagan
CHAIRMAN OF BOARD OF GOVERNORS: Very Rev Canon L Stevenson

Enrolment Number: 612

Admissions Number: 87

	APPLICATIONS		ADMISSIONS	
	Rec	P1	Rec	P1
2009/2010 School Year	-	63	-	63
2010/2011 School Year	-	60	-	60
2011/2012 School Year	-	60	-	59

Actual enrolment in September 2011: 403 pupils aged 4-11 years (Boys/Girls)
 Expected enrolment in September 2012: 421 pupils aged 4-11 years (Boys/Girls)
 School Management Type: Maintained

ADMISSION

If the school's admissions and enrolment numbers have not been reached the school will admit all the children of compulsory school age whose parents wish them to attend the school. These children are those who will reach their 4th birthday on or before 1 July 2012.

ADMISSIONS CRITERIA

An admission sub-committee consisting of the Principal and three other Governors will apply the following criteria to identify which children should be admitted either at initial admission to education or on transfer from another school. In selecting children for admission children resident in Northern Ireland at the time of their proposed admission to the school will be selected for admission to the school before any child not so resident.

CHILDREN OF COMPULSORY SCHOOL AGE

- 1 Children of compulsory school age.
- 2 Children who will have brothers or sisters, (half brothers/half sisters) attending the school in the 2012/2013 school year.
- 3 Children whose brothers or sisters previously attended the school.
- 4 Sons or daughters of permanent employees at the school.
- 5 Children who attended St Mary's Nursery, Banbridge or St Mary's Playgroup, Banbridge.
- 6 Children for whom the school is the nearest maintained primary school to the child's home.
- 7 Children with exceptional circumstances (medical, social or other problems) that necessitate admission to St. Mary's Primary School, Banbridge rather than any other primary school. The circumstances should be personal to the child and must be supported by independent and appropriate documentation, providing evidence of the circumstances being described as being exceptional.
- 8 Children whose parent(s) previously attended the school.
- 9 The remaining places will be allocated on the basis of the proximity of the child's home to the school priority being given to those living nearest to the school.

Criterion 9 will also be used to discriminate within any oversubscribed criterion.

Applicants should note that they may be required to produce documents verifying their address.

The Board of Governors reserves the right to require such supplementary evidence as it may determine to support or verify information on any application form.

The provision of false or incorrect information or the failure to provide information within the deadlines set by schools can result in the withdrawal of a place and the inability to offer a place on the part of any school nominated on the applicant's application form.

ARRANGEMENTS FOR ADMISSION

During the Spring term 2012 children to be admitted to P1 in September 2012 will be invited to the school with their parents to visit the P1 classes, to meet the P1 teachers and support staff. An induction meeting for parents will take place at the end of June 2012 when parents will be provided with additional information.

St Mary's Primary School (Dechomet)
6 Closkelt Road
Ballyward
CASTLEWELLAN
BT31 9QE
Telephone No: (028) 4065 0426
Email: bdoyle360@c2kni.net

PRINCIPAL: Mr Brian Doyle
CHAIRMAN OF BOARD OF GOVERNORS: Rev Archdeacon W E Boyle

Enrolment Number: 95

Admissions Number: 14

	APPLICATIONS		ADMISSIONS	
	Rec	P1	Rec	P1
2009/2010 School Year	4	5	4	5
2010/2011 School Year	1	15	1	15
2011/2012 School Year	4	8	4	8

Actual enrolment in September 2011: 76 pupils aged 4-11 years (Boys/Girls)
Expected enrolment in September 2012: 72 pupils aged 4-11 years (Boys/Girls)
School Management Type: Maintained

ADMISSION

If the school's admissions and enrolment numbers have not been reached the school will admit all children of the appropriate age whose parents wish them to attend the school. These children are:-

- i firstly those of compulsory school age (children who reach their fourth birthday on or before 1 July 2012); then
- ii those who reach their fourth birthday between 2 July and 1 September 2012 (both dates inclusive) - to be admitted on 5 September 2012; then
- iii those who reach their fourth birthday between 2 September 2012 and 30 June 2013 (both dates inclusive) - to be admitted on Monday following their fourth birthday.

Children in categories ii and iii will only be selected for admission if places are not filled by children in earlier categories. Children under compulsory school age will only be admitted if the present level of resources and teaching staff are available for the **2012/2013** School Year.

The maximum number of children in any class which includes reception pupils is 30.

ADMISSIONS CRITERIA

The Board of Governors will apply the following criteria to identify which children should be admitted either at initial admission to education or on transfer from another school. In selecting children for admission children resident in Northern Ireland at the time of their proposed admission to the school will be selected for admission to the school before any child not so resident. The criteria will be applied first to children of compulsory school age and where places remain available to children not of compulsory school age.

- 1 Children of compulsory school age who normally reside in the parishes of Upper and Lower Drumgoland and in the historical catchment area. (The details of this area are available from the school).
- 2 Brothers/sisters of pupils currently attending.
- 3 Son or daughter of permanent employees of the school.
- 4 Children of compulsory age from other areas.
- 5 Special circumstances (social and medical) will be considered by the Board of Governors and may have to be given special precedence to some of the above.
- 6 Nearness of parental home at date of admission, priority being given to those living nearest the school.

Criterion 6 will also be used to discriminate within any over-subscribed criterion (except criterion 1).

The Board of Governors reserves the right to require such supplementary evidence as it may determine to support or verify information on any application form.

The provision of false or incorrect information or the failure to provide information within the deadlines set by primary schools can result in the withdrawal of a place and the inability to offer a place on the part of any school nominated on the applicant's application form.

ADMISSIONS CRITERIA FOR ADMISSION TO YEARS 2-7

The Board of Governors of St Mary's Primary School, Dechomet has determined the following criteria shall be applied in the order set down below to Years 2 - 7.

- 1 Pupils will be considered for enrolment provided that the school will not exceed its enrolment number as determined by the Department of Education.
- 2 Pupils will be considered for admission provided that, in the opinion of the Board of Governors, they would not prejudice the efficient use of the school's resources.
- 3 Pupils regarded by the Board of Governors, on the basis of written and other evidence supplied by the parents/guardians and statutory or other agencies as having special circumstances eg medical, social or security reasons.
- 4 Pupils who normally reside in the parishes of Upper and Lower Drumgooland and in the historical catchment area. (The details of this are available from school).
- 5 Pupils whose parent/guardian is presently a permanent member of the school teaching ancillary/auxiliary staff (or who have been appointed to take up imminent employment in the school).

DATE OF ADMISSION

Children will be admitted to P1 if their fourth birthday has fallen on or before 1 July 2012. Parents must bring their child's birth certificate on the first date of admission.

VISITING ARRANGEMENTS

It is the aim of St Mary's Primary School, Dechomet to involve parents in the education of their children and to inform them as fully as possible about their children's progress.

Before Enrolment

- (a) We will contact you before your child is due to start and invite the child to meet the teacher and see the classroom. As your child changes classes, we will make every effort for you to meet your child's new teacher before the change takes place.
- (b) Entrants who have previously attended another school:-
 - (i) An interview will be arranged with the principal;
 - (ii) Parents will be welcome to view the school premises;
 - (iii) A meeting can be arranged with the prospective teacher(s) of the child or children.

St Mary's Primary School
Downpatrick Street
Rathfriland
BT34 5DQ
Telephone No: (028) 4063 0630
Email: mmconville950@c2kni.net

PRINCIPAL: Miss M McConville
CHAIRMAN OF BOARD OF GOVERNORS: Mr M McNulty

Enrolment Number: 115

Admissions Number: 16

	APPLICATIONS		ADMISSIONS	
	Rec	P1	Rec	P1
2009/2010 School Year	-	11	-	11
2010/2011 School Year	-	15	-	15
2011/2012 School Year	-	16	-	16

Actual enrolment in September 2011: 102 pupils aged 4-11 years (Boys/Girl)
Expected enrolment in September 2012: 103 pupils aged 4-11 years (Boys/Girls)
School Management Type: Maintained

ADMISSION

If the school's admissions and enrolment numbers have not been reached the school will admit all children of the appropriate age whose parents wish them to attend the school. These children are those of compulsory school age (children who reach their fourth birthday on or before 1 July 2012) - to be admitted on 1 September 2012.

ADMISSIONS CRITERIA

The Board of Governors will apply the following criteria to identify which children should be admitted either at initial admission to education or on transfer from another school. In selecting children for admission children resident in Northern Ireland at the time of their proposed admission to the school will be selected for admission to the school before any child not so resident.

- 1 Children of compulsory school age.
- 2 Children who will have brothers or sisters in attendance during the 2012/2013 School Year.
- 3 Children whose brothers and sisters previously attended the school.
- 4 Sons or daughters of permanent employees at the school.
- 5 Children for whom the school is the Catholic Maintained primary school nearest to their home.
- 6 Preference will be given to children with exceptional circumstances (medical, social or other problems) that necessitate admission to St Mary's Primary School, Rathfriland rather than any other primary school. The circumstances should be personal to the child and must be supported by independent and appropriate documentation, providing evidence of the circumstances being described as being exceptional.
- 7 The remaining places will be allocated on the basis of the proximity of the child's home to the school, priority being given to those living nearest to the school. (Distance will be measured on Google Maps UK). If the final places to be allocated have identical measurements as identified by Google Maps UK, selection will be on the basis of alphabetical order of surname, then forename, then middle name.

Criterion 7 will also be used to discriminate within any oversubscribed criterion (except criterion 1).

The Board of Governors reserves the right to require such supplementary evidence as it may determine to support or verify information on any application form.

The Provision of false or incorrect information or the failure to provide information within the deadlines set can result in the withdrawal of a place and the inability to offer a place on the part of any school nominated on the applicant's application form.

ADMISSION P2 – P7

Any child will be admitted within the enrolment number provided such admission is without prejudice to the efficient use of resources.

ARRANGEMENTS FOR ADMISSION

During the summer term 2012, children to be admitted to P1 in 2012/2013 School Year will be invited to the school with their parents to meet the teacher and to be provided with additional information.

St Matthew's Primary School
27 Dolly's Brae
Ballyward
Co Down
BT31 9AZ
Telephone No: (028) 4065 0311
Email: info@magheramayo.castlewellan.ni.sch.uk

PRINCIPAL: Mrs M Devlin, BEd
CHAIRMAN OF BOARD OF GOVERNORS: Rev Arch W Boyle

Enrolment Number: 87

Admissions Number: 12

	APPLICATIONS		ADMISSIONS	
	Rec	P1	Rec	P1
2009/2010 School Year	-	13	-	13
2010/2011 School Year	-	4	-	4
2011/2012 School Year	-	11	-	11

Actual enrolment in September 2011: 56 pupils aged 4-11 years (Boys/Girls)
Expected enrolment in September 2012: 53 pupils aged 4-11 years (Boys/Girls)
School Management Type: Maintained

ADMISSION

If the school's admissions and enrolment numbers have not been reached the school will admit all children of the appropriate age whose parents wish them to attend the school. These children are:-

- i those of compulsory school age (children who reach their fourth birthday on or before 1 July 2012);
- ii those who reach their fourth birthday between 2 July and 1 September 2012 (both dates inclusive) - to be admitted on 1 September 2012;
- iii those who reach their fourth birthday during the Autumn term - to be admitted at the beginning of the Spring term;
- iv those who reach their fourth birthday during the Spring term - to be admitted at the beginning of the Summer term;
- v those who reach their fourth birthday during the summer term to be admitted by arrangement with the Principal.

Children in categories ii to v will only be selected for admission if places are not filled by children in earlier categories.

The school will continue to admit children not of compulsory school age as above, unless the Department of Education determines that such children will be zero-rated for funding purposes.

ADMISSIONS CRITERIA

An admission sub committee of the Board of Governors will apply the following criteria to identify which children should be admitted either at initial admission to education or on transfer from another school. In selecting children for admission children resident in Northern Ireland at the time of their proposed admission to the school will be selected for admission to the school before any child not so resident. The criteria will be applied first to children of compulsory school age and where places remain available to children not of compulsory school age.

- 1 Children who normally reside in the parishes of Upper and Lower Drumgooland.
- 2 Children who live in other parts of the historical catchment area.
- 3 Brothers/sisters of pupils currently attending.
- 4 Son or daughter of permanent employees of the school.
- 5 Other children.

In the event of over-subscription within any of the above criteria the following sub-criteria will apply:-

- (a) Brothers or sisters of children already in attendance during the 2012/2013 School Year;
- (b) Sons or daughters of employees at the school;
- (c) Brothers or sisters of prior pupils of the school;
- (d) Preference will be given to children with exceptional circumstances (medical, social or other problems) that necessitate admission to St Matthew's Primary School, Ballyward rather than any other primary school. The circumstances should be personal to the child and must be supported by independent and appropriate documentation, providing evidence of the circumstances being described as being exceptional.
- (e) The remaining places will be allocated on the basis of the proximity of the child's home to the school, priority being given to those living nearest to the school measured by walking distance.

Sub criterion (e) shall also be used in the event of over-subscription within a sub criterion.

ARRANGEMENTS FOR ADMISSION

Parents of prospective pupils in 2012/2013 should contact the Principal as soon as possible to arrange a visit.

- (a) During the summer term 2012, children to be admitted to P.1 in the 2012/2013 School Year will be invited to spend two mornings in the school. Additional information will be provided for parents at this time.
- (b) Entrants who have previously attended another school:
 - (i) An interview will be arranged with the principal.
 - (ii) Parents and children will be welcome to view the school premises.
 - (iii) A meeting can be arranged with the prospective teacher(s) of the child or children.

St Michael's Primary School
145 Rathfriland Road
Dromara
Dromore
Co Down
BT25 2EE
Telephone/Fax No: (028) 9753 2404

PRINCIPAL: Mr C McAlarney, BEd, DASE
CHAIRMAN OF BOARD OF GOVERNORS: Mrs Mairead McKey

Enrolment Number: 106

Admissions Number: 15

	APPLICATIONS		ADMISSIONS	
	Rec	P1	Rec	P1
2009/2010 School Year	5	7	5	7
2010/2011 School Year	7	4	7	4
2011/2012 School Year	6	9	6	9

Actual enrolment in September 2011: 59 pupils aged 4-11 years (Boys/Girls)
Expected enrolment in September 2012: 65 pupils aged 4-11 years (Boys/Girls)
School Management Type: Maintained

ADMISSION

If the school's admission and enrolment numbers have not been reached the school will admit all children of the appropriate age whose parents wish them to attend the school. These children are:-

- i firstly those of compulsory school age (children who reach their fourth birthday on or before 1 July 2012); then
- ii those who reach their fourth birthday between 2 July and 1 September 2012 (both dates inclusive) - to be admitted on 1 September 2012; then
- iii those who reach their fourth birthday throughout the school year 2012/2013 - to be admitted on the Monday following their fourth birthday.

Children in categories ii and iii will only be selected for admission if places are not filled by children in earlier categories.

The school will continue to admit children not of compulsory school age as above, unless the Department determines that such children will be zero-rated for funding purposes.

ADMISSIONS CRITERIA

The Board of Governors will apply the following criteria to identify which children should be admitted either at initial admission to education or on transfer from another school. In selecting children for admission children resident in Northern Ireland at the time of their proposed admission to the school will be selected for admission to the school before any child not so resident.

- 1 Children of compulsory school age.
- 2 Children who will have brothers or sisters in attendance during the 2012/2013 School Year.
- 3 Children whose brothers and sisters previously attended the school.
- 4 Sons or daughters of permanent employees at the school.
- 5 Children who live within the parish.
- 6 Preference will be given to children with exceptional circumstances (medical, social or other problems) that necessitate admission to St Michael's Primary School, Dromara rather than any other primary school. The circumstances should be personal to the child and must be supported by independent and appropriate documentation, providing evidence of the circumstances being described as being exceptional.

7 The remaining places will be allocated on the basis of the proximity of the child's home to the school, priority being given to those living nearest to the school, (as measured by driving distance on public road).

Criterion 7 will also be used to discriminate within any oversubscribed criterion (except criterion 1).

ARRANGEMENTS FOR ADMISSION

During the summer term 2012, children to be admitted to Reception/P1 in September 2012, will be invited to come to the school with their parents to meet staff and to be provided with additional information.

Bridge Integrated Primary School
Ballygowan Road
Banbridge
BT32 3EL
Telephone No: (028) 4066 2055
Fax No: (028) 4062 3519
Email: info@bridge.banbridge.ni.sch.uk

PRINCIPAL: Mrs T Devlin, BEd Hons PQH (NI)
CHAIRMAN OF BOARD OF GOVERNORS: Mrs J Hughes

Enrolment Number: 406

Admissions Number: 58

	APPLICATIONS		ADMISSIONS	
	Rec	P1	Rec	P1
2009/2010 School Year	-	71	-	60
2010/2011 School Year	-	79	-	58
2011/2012 School Year	-	73	-	60

Actual enrolment in September 2011: 398 pupils aged 4-11 years (Boys/Girls) + 15 statemented pupils
Expected enrolment in September 2012: 400 pupils aged 4-11 years (Boys/Girls) + 13 statemented pupils
School Management Type: Grant Maintained Integrated

1 COMPLETION OF APPLICATION FORMS

It is essential that parents complete both the SELB application form and Bridge Integrated Primary School's enrolment form if a place is being sought in the school. The Board of Governors will use the information provided on both forms to establish which children should be admitted.

2 ADMISSIONS POLICY

The Board of Governors is conscious of its responsibilities to meet the legal requirements placed upon it by The Education Reform (Northern Ireland) Order 1989 in relation to the curriculum. Only children of compulsory school age will be admitted. If the school's admission and enrolment figures have not been reached the school will admit all children of compulsory school age whose parents wish them to attend. Any child who reaches his/her fourth birthday on or before 1st July 2012 is of compulsory school age and must receive education from September 2012.

The school considers that a stated preference for Bridge Integrated Primary School is an indication that parents are in agreement with the ethos, policies, discipline and other procedures of the school. These are clearly identified in the school's prospectus which should be read before completing the open enrolment form.

The school is committed to retaining a balance between the two major religious traditions in Northern Ireland. The Board of Governors is committed to ensuring that as far as possible, at least 40%, and no more than 60%, of the total pupils in the school should be drawn from each of the Roman Catholic and Protestant traditions.

In order to achieve the appropriate balance, all applications will be categorised as Roman Catholic, Protestant or Other Religion/No Religion prior to applying the admissions criteria numbered 1-6 as set out in Paragraph 3. **The information provided on the school's own enrolment form will be used for this purpose. It is essential therefore that this form is completed accurately.** Places will be allocated as follows:

- Approx 45% (i.e. 26 places) to applications coming from the Protestant Tradition
- Approx 45% (i.e. 26 places) to applications coming from the Roman Catholic Tradition
- Approx 10% (i.e. 6 places) to applications from those who describe themselves as being from the Other Religion/No Religion category.

Should places be available in any of the three categories, the remaining places will be filled alternately from the other over-subscribed categories, starting with the category in which there were the most applications. In the event that there are more applicants than places available, the Board of Governors has determined that the following criteria shall be applied in the order set down for children of compulsory school age.

3 ADMISSION CRITERIA

The Board of Governors will apply the following criteria to identify which children should be admitted either at initial admission to education (P1) or on transfer from another school. In selecting children for admission children resident in Northern Ireland at the time of the proposed admission to the school will be admitted to the school before any child not so resident.

- 1 Children who will have brothers or sisters *(half brothers/half sisters or foster bothers/foster sisters) in attendance during the 2012/13 school year.
* In this context brothers and sisters will be taken to mean step brothers/step sisters.
- 2 Children whose parent(s), brother(s) or sister(s) (half brother(s)/half sister(s)) previously attended the school.
- 3 Children whose parent/guardian is a permanent employee of the school or is due to take up such an appointment up to the 1st September 2012 or who is a member of the Board of Governors or who is a permanent employee within the Integrated Schools Sector.
- 4 Children of families with exceptional circumstances (social, medical or security) that necessitate admission to Bridge Integrated Primary School rather than any other primary school. **The Board of Governors has a duty to verify any claim for Exceptional Circumstances therefore the exceptional circumstances must be made in writing at the time of application and must include written evidence for e.g. from a GP, Social Worker, Employer etc. The acceptance of Exceptional Circumstances is at the discretion of the Board of Governors.**
- 5 Children who are first born in a family (to mean the first child of the two parents named on both forms).
- 6 All other children.

In the event of over-subscription in any criterion, selection for all places remaining in this category will be on the basis of initial letter of the surname, in the order set out below.

E Mc Z I Mac V J B N D Y P H Q C R W G X A O S T U F M K L

The above was determined by a randomised selection of letters of the alphabet carried out by the Board of Governors on 27th September 2011.

Where surnames begin with the same initial letter, the subsequent letters of the surnames will be used in alphabetical order. In the event of two identical surnames the alphabetical order of the initials of the forenames will be used, and if necessary the subsequent letters of the forenames.

In the interests of clarity the following points are reiterated for the assistance of all applicants:

- In accordance with the 1997 Education (NI) Order preference for admission to Bridge Integrated Primary School will be given to pupils resident in Northern Ireland at the time of their proposed admission.
- Parents seeking admission for their children must complete the school’s own Enrolment Form as well as the Southern Education and Library Board’s application form. The Board of Governors will use the information provided on its own Enrolment Form to determine the status of the applicant in relation to the admissions criteria for Bridge Integrated Primary School **and the school’s overall religious balance** so it is essential that the school’s Enrolment Form is completed fully and accurately.



If further information would be helpful before submitting these forms please contact the school.

These application forms must be returned to Bridge Integrated Primary School not later than 12 Noon on Wednesday 18th January 2012.

Any forms received after 12 noon on this closing date will be treated as late, and must therefore be considered after all others in line with the regulations as set out in DENI circular number 2011/13 paragraph 63.

ARMAGH CITY AND DISTRICT COUNCIL AREA

List of Primary Schools

CONTROLLED

*Aghavilly
Clare
Darkley
Derryhale
Drumhillery
Drumsallen
Foley
Hamiltonsbawn
Hardy Memorial
*Keady
Killylea
Lisnadill
Markethill
Mountnorris
Mullavilly
Orchard County
Poyntzpass
Tandragee
The Armstrong (Armagh)
The Cope (Loughgall)

MAINTAINED

Christian Brothers' (Armagh)
Christian Brothers' Bunscoil (Armagh)
Clea
Mount St Catherine's (Armagh)
Our Lady's and St Mochua's (Derrynoose)
Our Lady's (Tullysaran)
St Francis of Assisi (Keady)
St James' (Drumatee)
St Jarlath's (Blackwatertown)
St John's (Eglishe)
St John's (Middletown)
St Joseph's (Madden)
St Joseph & St James' (Poyntzpass)
St Malachy's (Armagh)
St Mary's (Granemore)
St Michael's (Clady)
St Oliver Plunkett's (Ballyhegan)
St Patrick's (Armagh)
St Peter's (Collegelands)

OTHER MAINTAINED PRIMARY

The Drelincourt School (Church of Ireland)
(Armagh)

GRANT MAINTAINED INTEGRATED

Saints and Scholars (Armagh)

*** Draft Development Proposals for the closure of Aghavilly and Keady Primary Schools are currently being consulted on. Further details can be obtained from Ms Margaret Patrick, Planning & Development Officer, Southern Education & Library Board. Tel: (028) 3751 2205.**

A separate booklet containing the admissions criteria for the primary schools in the above area is available. Details of these schools can be obtained from the Pupil and Parent Unit or on the board's website www.selb.org/pupilparent/index.htm.

COOKSTOWN DISTRICT COUNCIL AREA

List of Primary Schools

CONTROLLED

Ballytrea
Churchtown
Coagh
Cookstown
Donaghey
Moneymore
Orritor
Queen Elizabeth (II) Pomeroy
Stewartstown
Woods

MAINTAINED

Ballylifford
Crievagh
Derrychrin
Holy Trinity, Cookstown
Lissan
Sacred Heart (Rock)
St Joseph's (Killeenan)
St Malachy's (Drummullan)
St Mary's (Dunamore)
St Mary's (Pomeroy)
St Mary's (Stewartstown)
St Patrick's (Loup)
St Patrick's (Moneymore)
St Patrick's (Mullinahoe)
St Peter's (Moortown)

GRANT MAINTAINED INTEGRATED

Phoenix (Cookstown)

A separate booklet containing the admissions criteria for the primary schools in the above area is available. Details of these schools can be obtained from the Pupil and Parent Unit or on the board's website www.selb.org/pupilparent/index.htm

CRAIGAVON BOROUGH COUNCIL AREA

List of Primary Schools

CONTROLLED

Ballyoran
Birches
Bleary
Bocombra
Carrick (Lurgan)
Dickson (Lurgan)
Donacloney
Drumgor
Edenderry (Portadown)
Hart Memorial (Portadown)
King's Park
Lurgan Model
Maralin Village
Millington (Portadown)
Richmount
Tullygally
Waringstown

MAINTAINED

Presentation (Portadown)
St Anthony's (Craigavon)
St Brendan's (Moyraverty)
St Francis' (Lurgan)
St John the Baptist (Portadown)
Bunscoil Eoin Baiste (Portadown)
St Mary's (Derrymore)
St Mary's (Derrytrasna)
St Mary's (Maghery)
St Patrick's (Aghacommon)
St Patrick's (Derrynaseer)
St Patrick's (Magheralin)
St Teresa's (Lurgan)
Tannaghmore

OTHER MAINTAINED

Seagoe

GRANT MAINTAINED INTEGRATED

Portadown

A separate booklet containing the admissions criteria for the primary schools in the above area is available. Details of these schools can be obtained from the Pupil and Parent Unit or on the board's website www.selb.org/pupilparent/index.htm

DUNGANNON & SOUTH TYRONE BOROUGH COUNCIL AREA

List of Primary Schools

CONTROLLED

Augher Central
Aughnacloy
Bush
Carntall
Churchill
Donaghmore
Dungannon
Fivemiletown
Howard (Moygashel)
Killyman
Lisfearty
Moy Regional
Newmills
Richmond (Ballygawley)
Walker Memorial (Castlecaulfield)

MAINTAINED

Aughamullan
Blessed Patrick O'Loughran (Castlecaulfield)
Clintyclay
Derrylatinee (St Francis)
Edendork
Laghey
Primate Dixon (Coalisland)
Roan St Patrick's
St Brigid's (Augher)
St Brigid's (Brócagh)
St John's (Kingsisland)
St John's (Moy)
St Joseph's (Caledon)
St Joseph's (Galbally)
St MacCartan's Convent (Clogher)
St Malachy's (Glencull)
St Mary's (Aughnacloy)
St Mary's (Ballygawley)
St Mary's (Cabra)
St Mary's (Fivemiletown)
St Mary's (Lisbuoy)
St Patrick's (Annaghmore)
St Patrick's (Aughadarragh)
St Patrick's (Donaghmore)
St Patrick's (Dungannon)

OTHER MAINTAINED PRIMARY

Gaelscoil Aodha Rua (Dungannon)
Gaelscoil Ui Neill (Coalisland)

GRANT MAINTAINED INTEGRATED

Windmill (Dungannon)

A separate booklet containing the admissions criteria for the primary schools in the above area is available. Details of these schools can be obtained from the Pupil and Parent Unit or on the board's website www.selb.org/pupilparent/index.htm

NEWRY AND MOURNE DISTRICT COUNCIL AREA

List of Primary Schools

CONTROLLED

Annalong
Bessbrook
Brackenagh West
Cortamlet
Dromore Road (Warrenpoint)
Kilkeel
Kingsmills
Mullaglass
Newtownhamilton
Windsor Hill (Newry)

CONTROLLED INTEGRATED

Kilbroney (Rostrevor)

OTHER MAINTAINED

Bunscoil an Iuir (Newry)
Gaelscoil na mBeann (Kilkeel)

*Gaelscoil na mBeann has received conditional approval from the Department of Education

MAINTAINED

Anamar
Ballyholland
Carrick (Warrenpoint)
Clonalig
Clontifleece
Cloughoge
Dromintee
Grange (Kilkeel)
Holy Cross (Kilkeel)
Jonesborough
Killeen
Killowen
Moneydarragh
St Brigid's (Drumilly)
St Brigid's (Glassdrummond)
St Bronagh's (Rostrevor)
St Clare's Convent (Newry)
St Colman's (Kilkeel)
St Colman's Abbey (Newry)
St Colman's (Saval)
St Dallan's (Warrenpoint)
St Joseph's (Ballymartin)
St Joseph's (Bessbrook)
St Joseph's (Meigh)
St Joseph's Convent (Newry)
St Laurence O'Toole's (Belleeks)
St Malachy's (Ballymoyer)
St Malachy's (Carnagat)
St Malachy's (Carrickcruppin)
St Mary's (Barr)
St Mary's (Glasdrumman)
St Mary's (Mullaghbawn)
St Michael's (Newtownhamilton)
St Oliver's (Carrickrovaddy)
St Oliver Plunkett's (Forkhill)
St Patrick's (Ballymaghera)
St Patrick's (Crossmaglen)
St Patrick's (Cullyhanna)
St Patrick's (Drumgreenagh)
St Patrick's (Mayobridge)
St Patrick's (Newry)
St Paul's (Cabra)
St Peter's (Cloughreagh)
St Ronan's (Newry)
St Teresa's (Tullyherron)

A separate booklet containing the admissions criteria for the primary schools in the above area is available. Details of these schools can be obtained from the Pupil and Parent Unit or on the board's website www.selb.org/pupilparent/index.htm

PRĪĒMIMAS Į PRADINĘ MOKYKLĄ, MOKYKLOS DARŽELINĘ KLASĘ/DARŽELĮ AR ŽAIDIMŲ GRUPES

Jei 2012 m. liepos 1 d. ar anksčiau jūsų vaikui sueina 4 metai, jis (ji) privalo pradėti lankyti mokyklą.

Vaikams, gimusiems nuo **2008 m. liepos 2 d.** iki **2009 m. liepos 1 d.** yra **laisvų nemokamų vietų ikimokyklinio ugdymo įstaigose** – vaikų darželiuose ir pradinė mokyklų darželinėse klasėse, o taip pat ir kai kuriose žaidimų grupėse.

Keliose mokyklose gali likti **laisvų vietų** ir jaunesniems vaikams, po to, kai bus paskirstytos vietos privalomojo amžiaus vaikams.

Savo pasirinktoje mokykloje ar žaidimų grupėje tėvai turėtų pasiimti paraiškos formas ir informacinį leidinį. Formas galima pasiimti ir sveikatos centruose, bibliotekose, piliečių konsultaciniuose biuruose (CAB) ar Pietų Tyrone Bendruomenės sustiprinimo programoje (STEP).

Prašome savo paraišką palikti

- **Jūsų pasirinktoje pradinėje mokykloje iki 2012 m. sausio 18 d., trečiadienio (12 val. dienos) arba**
- **Jūsų pasirinktoje ikimokyklinio ugdymo įstaigoje iki 2012 m. sausio 11 d., trečiadienio (12 val. dienos)**

Jei jums reikalinga pagalba, kreipkitės į Southern Education & Library Board, 3 Charlemont Place, The Mall, **Armagh**, BT61 9AX.

Tel. Nr.: (028) 3751 2526/2455

Lithuanian

ADMISSÃO À ESCOLA PRIMÁRIA, ESCOLA/UNIDADE PRÉ-PRIMÁRIA OU INFANTÁRIO

Se o seu filho fizer quatro anos até 1 de Julho de 2012, ele deverá frequentar a escola.

Se o seu filho nasceu entre **2 de Julho de 2008 e 1 de Julho de 2009**, **vagas gratuitas para o ensino pré-primário** estão disponíveis em creches e grupos de escolas primárias e nalguns infantários.

Algumas escolas poderão também disponibilizar **vagas** para crianças mais novas após a colocação das outras crianças mais velhas.

Os pais/encarregados de educação devem obter o formulário de candidatura e o folheto informativo dirigindo-se à escola ou ao infantário da sua preferência. Os formulários e folhetos informativos também podem ser adquiridos através dos Centros de Saúde, Bibliotecas, CAB ou STEP.

- **Por favor, entregue o formulário preenchido na escola primária da sua preferência até ao meio-dia de quarta-feira, 18 de Janeiro de 2012.**
- **ou**
- **na escola pré-primária da sua preferência até ao meio-dia de quarta-feira, 11 de Janeiro de 2012**

Se precisar de assistência, por favor, contacte a Southern Education & Library Board, 3 Charlemont Place, **Armagh**, BT61 9AX.

N.º de Tel.: (028) 3751 2526/2455

Portuguese

ZAPISY DO SZKOŁY PODSTAWOWEJ, PRZEDSZKOLA, ODDZIAŁU PRZEDSZKOLNEGO LUB GRUPY PRZEDSZKOLNEJ

Dzieci, które w dniu 1 lipca 2012 r. będą miały ukończone 4 lata mają obowiązek uczęszczania do szkoły.

Dzieciom urodzonym między **2 lipca 2008 r. a 1 lipca 2009 r.** przysługują **bezpłatne miejsca** w przedszkolach oraz w oddziałach przedszkolnych szkół podstawowych, a także w niektórych grupach przedszkolnych (*playgroups*). **Niektóre szkoły** mogą również oferować **bezpłatne miejsca** dla młodszych dzieci.

Po formularz zgłoszeniowy i broszurę informacyjną należy zgłosić się do wybranej szkoły lub grupy przedszkolnej. Formularze można także otrzymać w ośrodkach zdrowia, bibliotekach, biurach porad obywatelskich (CAB) lub biurach programu STEP.

Wypełniony formularz należy złożyć w wybranej szkole podstawowej do 18 stycznia 2012 r. (środa) do godz. 12.00 lub w wybranej placówce przedszkolnej do 11 stycznia 2012 r. (środa) do godz. 12.00.

Szczegółowych informacji udziela Southern Education & Library Board, 3 Charlemont Place, The Mall, **Armagh**, BT61 9AX.

Tel.: (028) 3751 2526/2455

Polish